

Datasheet for ABIN6976176
CCL2 ELISA Kit



[Go to Product page](#)

1 Image

5 Publications

Overview

Quantity:	96 tests
Target:	CCL2
Reactivity:	Mouse
Method Type:	Sandwich ELISA
Detection Range:	78 pg/mL - 5000 pg/mL
Minimum Detection Limit:	78 pg/mL
Application:	ELISA

Product Details

Purpose:	For the quantitative determination of mouse monocyte chemotactic protein 1/monocyte chemotactic and activating factor (MCP-1/MCAF) concentrations in serum, plasma, tissue homogenates.
Sample Type:	Plasma, Serum, Tissue Homogenate
Analytical Method:	Quantitative
Detection Method:	Colorimetric
Specificity:	This assay has high sensitivity and excellent specificity for detection of mouse MCP-1. No significant cross-reactivity or interference between mouse MCP-1 and analogues was observed. Note: Limited by current skills and knowledge, it is impossible for us to complete the cross-reactivity detection between mouse MCP-1 and all the analogues, therefore, cross reaction may still exist.
Sensitivity:	19.5 pg/mL

Product Details

Components:	<ul style="list-style-type: none">• Assay plate• Standard• HRP-avidin (100 x concentrate)• Biotin-antibody (100 x concentrate)• Sample Diluent• HRP-avidin Diluent• Biotin-antibody Diluent• Wash Buffer (25 x concentrate)• TMB Substrate• Stop Solution• Adhesive Strip
-------------	---

Target Details

Target:	CCL2
Alternative Name:	chemokine (C-C motif) ligand 2 (CCL2 Products)
Background:	<p>Abbreviation: CCL2</p> <p>Alias: GDCF-2, HC11, HSMCR30, MCAF, MCP-1, MCP1, MGC9434, SCYA2, SMC-CF, monocyte chemoattractant protein-1 monocyte chemotactic and activating factor monocyte secretory protein JE small inducible cytokine</p>
UniProt:	P10148
Pathways:	Cellular Response to Molecule of Bacterial Origin , Positive Regulation of Immune Effector Process , ER-Nucleus Signaling , Unfolded Protein Response , The Global Phosphorylation Landscape of SARS-CoV-2 Infection

Application Details

Application Notes:	Optimal working dilution should be determined by the investigator.
Sample Volume:	100 µL
Assay Time:	1 - 4.5 h
Plate:	Pre-coated
Protocol:	<ol style="list-style-type: none">1. Prepare reagents, samples and standards as instructed.2. Add 100 µL standard or sample to each well. Incubate 2 hours at 37 °C.3. Remove the liquid of each well, don't wash.4. Add 100 µL Biotin-antibody (1x) to each well. Incubate 1 hour at 37 °C.5. Aspirate and wash 3 times.

6. Add 100 µL HRP-avidin (1x) to each well. Incubate 1 hour at 37 °C
7. Aspirate and wash 5 times.
8. Add 90 µL of TMB Substrate to each well. Incubate for 15-30 minutes at 37 °C. Protect from light.
9. Add 50 µL Stop Solution to each well. Read at 450 nm within 5 minutes.

Reagent Preparation:

1. Biotin-antibody (1x) - Centrifuge the vial before opening. Biotin-antibody requires a 100-fold dilution. A suggested 100-fold dilution is 10 µL of Biotin-antibody + 990 µL of Biotin-antibody Diluent.
2. HRP-avidin (1x) - Centrifuge the vial before opening. HRP-avidin requires a 100-fold dilution. A suggested 100-fold dilution is 10 µL of HRP-avidin + 990 µL of HRP-avidin Diluent.
3. Wash Buffer (1x) - If crystals have formed in the concentrate, warm up to room temperature and mix gently until the crystals have completely dissolved. Dilute 20 mL of Wash Buffer Concentrate (25 x) into deionized or distilled water to prepare 500 mL of Wash Buffer (1 x).
4. Standard Centrifuge the standard vial at 6000-10000rpm for 30s. Reconstitute the Standard with 1.0 mL of Sample Diluent. Do not substitute other diluents. This reconstitution produces a stock solution of 5000 pg/mL. Mix the standard to ensure complete reconstitution and allow the standard to sit for a minimum of 15 minutes with gentle agitation prior to making dilutions. Pipette 250 µL of Sample Diluent into each tube (S0-S6). Use the stock solution to produce a 2-fold dilution series (below). Mix each tube thoroughly before the next transfer. The undiluted Standard serves as the high standard (5000 pg/mL). Sample Diluent serves as the zero standard (0 pg/mL).

Note:

- Kindly use graduated containers to prepare the reagent. Please don't prepare the reagent directly in the Diluent vials provided in the kit.
- Bring all reagents to room temperature (18-25 °C) before use for 30 min.
- Prepare fresh standard for each assay. Use within 4 hours and discard after use.
- Making serial dilution in the wells directly is not permitted.
- Please carefully reconstitute Standards according to the instruction, and avoid foaming and mix gently until the crystals have completely dissolved. To minimize imprecision caused by pipetting, use small volumes and ensure that pipettors are calibrated. It is recommended to suck more than 10 µL for once pipetting.
- Distilled water is recommended to be used to make the preparation for reagents. Contaminated water or container for reagent preparation will influence the detection result.

Sample Preparation:

- It is recommended to use fresh samples without long storage, otherwise protein degradation and denaturation may occur in these samples, leading to false results. Samples should therefore be stored for a short period at 2 - 8 °C or aliquoted at -20 °C (≤1 month) or -80 °C (≤ 3 months). Repeated freeze-thaw cycles should be avoided. Prior to assay, the frozen samples should be slowly thawed and centrifuged to remove precipitates.
- If the sample type is not specified in the instructions, a preliminary test is necessary to determine compatibility with the kit.
- If a lysis buffer is used to prepare tissue homogenates or cell culture supernatant, there is a

Application Details

possibility of causing a deviation due to the introduced chemical substance. The recommended dilution factor is for reference only.

- Please estimate the concentration of the samples before performing the test. If the values are not in the range of the standard curve, the optimal sample dilution for the particular experiment has to be determined. Samples should then be diluted with PBS (pH = 7.0-7.2).

Assay Precision:

Intra-assay Precision (Precision within an assay): CV% < 8% Three samples of known concentration were tested twenty times on one plate to assess.

Inter-assay Precision (Precision between assays): CV% < 10% Three samples of known concentration were tested in twenty assays to assess.

Restrictions:

For Research Use only

Handling

Storage:

4 °C, -20 °C

Storage Comment:

Unopened kit Store at 2 - 8°C. Do not use the kit beyond the expiration date. May be stored for up to 1 month at 2 - 8°C. Coated assay Try to keep it in a sealed aluminum foil bag, plate and avoid the damp. Standard May be stored for up to 1 month at 2 - 8°C. If Biotin-antibody don't make recent use, better keep it store at HRP-avidin -20°C. Biotin-antibody Diluent Opened kit HRP-avidin Diluent Sample May be stored for up to 1 month at 2 - 8°C. Diluent Wash Buffer TMB Substrate Stop Solution *Provided this is within the expiration date of the kit.

Expiry Date:

6 months

Publications

Product cited in:

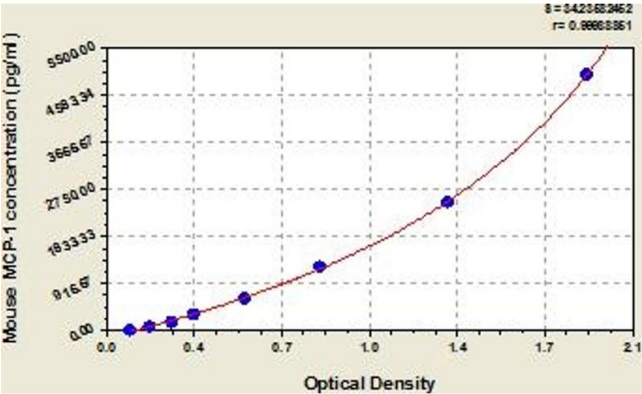
Li, Feng, Zhang, Feng, Wang, Zhao, Meng, Li: "Mst1 deletion attenuates renal ischaemia-reperfusion injury: The role of microtubule cytoskeleton dynamics, mitochondrial fission and the GSK3β-p53 signalling pathway." in: **Redox biology**, Vol. 20, pp. 261-274, (2019) ([PubMed](#)).

Xu, Bai, Chen, Li, Qin, Meng, Zhang: "6-Shogaol ameliorates diabetic nephropathy through anti-inflammatory, hyperlipidemic, anti-oxidative activity in db/db mice." in: **Biomedicine & pharmacotherapy**, Vol. 97, pp. 633-641, (2018) ([PubMed](#)).

Tang, Wu, Lei, Yi, Xu, Lan, Yang, Liu: "HIF1α deletion facilitates adipose stem cells to repair renal fibrosis in diabetic mice." in: **In vitro cellular & developmental biology. Animal**, Vol. 54, Issue 4, pp. 272-286, (2018) ([PubMed](#)).

Fakhrudin, Dwi Astuti, Sulistyawati, Santosa, Susandarini, Nurrochmad, Wahyuono: "n-Hexane Insoluble Fraction of Plantago lanceolata Exerts Anti-Inflammatory Activity in Mice by Inhibiting Cyclooxygenase-2 and Reducing Chemokines Levels." in: **Scientia pharmaceutica**, Vol. 85, Issue 1, (2017) ([PubMed](#)).

Zong, Li, Zeng, Fang, Zhao: "The Effects of Interleukin-17 (IL-17)-Related Inflammatory Cytokines and A20 Regulatory Proteins on Astrocytes in Spinal Cord Cultured In Vitro." in: **Cellular physiology and biochemistry : international journal of experimental cellular physiology, biochemistry, and pharmacology**, Vol. 38, Issue 3, pp. 1100-10, (2016) ([PubMed](#)).



ELISA

Image 1. Typical Standard Curve