

Datasheet for ABIN6992324
ROR1 Protein (AA 30-403) (Fc Tag)



[Go to Product page](#)

2 Images

Overview

Quantity:	100 µg
Target:	ROR1
Protein Characteristics:	AA 30-403
Origin:	Human, Cynomolgus, Rhesus Monkey
Source:	HEK-293 Cells
Protein Type:	Recombinant
Biological Activity:	Active
Purification tag / Conjugate:	This ROR1 protein is labelled with Fc Tag.

Product Details

Purpose:	Human / Cynomolgus / Rhesus macaque ROR1 Protein, Mouse IgG2a Fc Tag
Purity:	>95 % as determined by SDS-PAGE.
Endotoxin Level:	Less than 0.1 EU per µg by the LAL method.

Target Details

Target:	ROR1
Alternative Name:	ROR1 (ROR1 Products)
Background:	Tyrosine-protein kinase transmembrane receptor ROR1 is also known as Neurotrophic tyrosine kinase, receptor-related 1 (NTRKR1), which belongs to the protein kinase superfamily or tyrosine protein kinase family or ROR subfamily. ROR1 contains 1 FZ (frizzled) domain, 1 Ig-like C2-type (immunoglobulin-like) domain, 1 kringle domain, 1 protein kinase domain. ROR1 is expressed at

Target Details

high levels during early embryonic development. The expression levels drop strongly around day 16 and there are only very low levels in adult tissues. Isoform Short is strongly expressed in fetal and adult CNS and in a variety of human cancers, including those originating from CNS or PNS neuroectoderm. ROR1 could interact with casein kinase 1 epsilon (CK1 ϵ) to activate phosphoinositide 3-kinase-mediated AKT phosphorylation and cAMP-response-element-binding protein (CREB), which was associated with enhanced tumor-cell growth.

Molecular Weight: 68.9 kDa

NCBI Accession: [NP_005003](#)

Pathways: [RTK Signaling](#), [WNT Signaling](#), [Nuclear Receptor Transcription Pathway](#), [Steroid Hormone Mediated Signaling Pathway](#), [Regulation of Lipid Metabolism by PPARalpha](#)

Application Details

Restrictions: For Research Use only

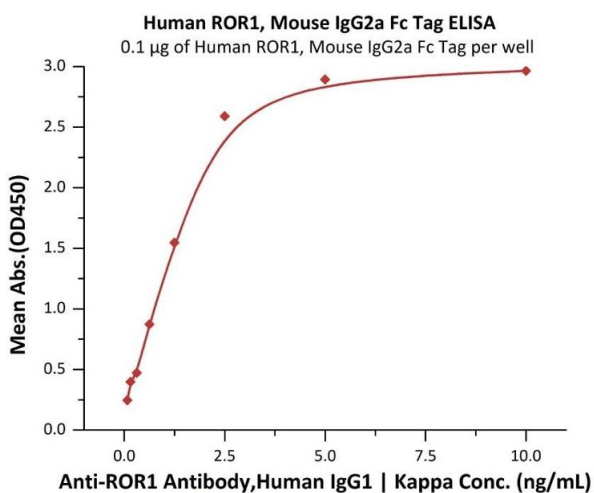
Handling

Format: Lyophilized

Buffer: 50 mM Tris, 100 mM Glycine, 25 mM Arginine, 150 mM NaCl, pH 7.5

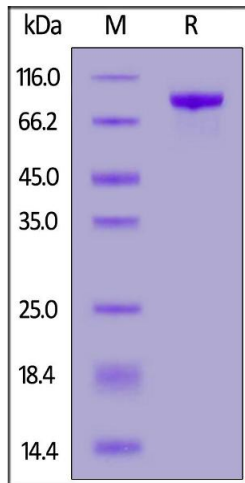
Storage: -20 °C

Images



ELISA

Image 1. Immobilized Human / Cynomolgus / Rhesus macaque ROR1, Mouse IgG2a Fc Tag (ABIN6992324) at 1 μ g/mL (100 μ L/well) can bind A Antibody, Human IgG1 | Kappa with a linear range of 0.08-3 ng/mL (QC tested).



SDS-PAGE

Image 2. Human / Cynomolgus / Rhesus macaque ROR1, Mouse IgG2a Fc Tag on under reducing (R) condition. The gel was stained overnight with Coomassie Blue. The purity of the protein is greater than 95 % .