

Datasheet for ABIN6992329

NOTCH3 Protein (AA 40-467) (Fc Tag)[Go to Product page](#)**2** Images

Overview

Quantity:	100 µg
Target:	NOTCH3
Protein Characteristics:	AA 40-467
Origin:	Human
Source:	HEK-293 Cells
Protein Type:	Recombinant
Biological Activity:	Active
Purification tag / Conjugate:	This NOTCH3 protein is labelled with Fc Tag.

Product Details

Purpose:	Human NOTCH3 Protein, Fc Tag
Purity:	>95 % as determined by SDS-PAGE.
Endotoxin Level:	Less than 1.0 EU per µg by the LAL method.

Target Details

Target:	NOTCH3
Alternative Name:	NOTCH3 (NOTCH3 Products)
Background:	<p>Notch3 is one of four mammalian Notch proteins, which act as signalling receptors and involve in developmental patterning, cell fate decisions, regulation of cell survival and proliferation.</p> <p>Notch3 could interact with membrane-bound ligands Jagged1, Jagged2 and Delta1 to regulate cell-fate determination. Via ligand activation, notch intracellular domain (NICD) is released and</p>

Target Details

forms a transcriptional activator RBPJ/RBPSUH complex, which activates genes of the enhancer of split locus. Consequently, the activation of Notch3 can lead to the implementation of differentiation, proliferation and apoptotic programs

Molecular Weight: 71.4 kDa

NCBI Accession: [NP_000426](#)

Pathways: [Notch Signaling](#)

Application Details

Restrictions: For Research Use only

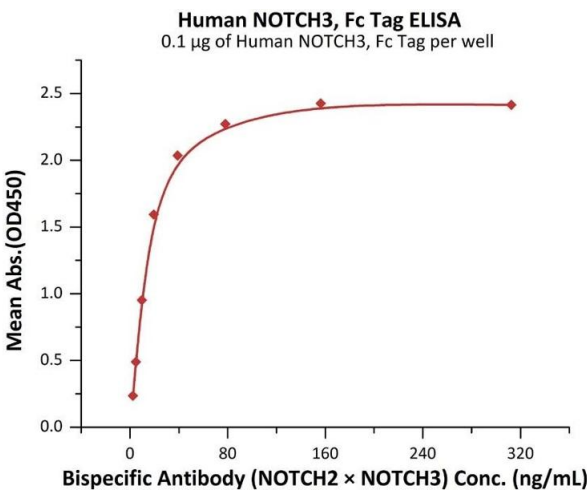
Handling

Format: Lyophilized

Buffer: 50 mM Tris, 100 mM Glycine, 25 mM Arginine, 150 mM NaCl, pH 7.5

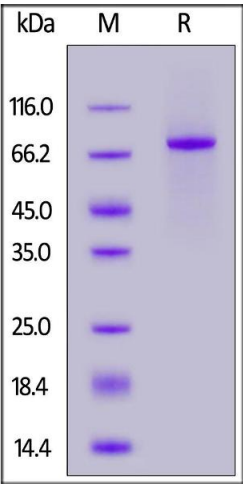
Storage: -20 °C

Images



ELISA

Image 1. Immobilized Human NOTCH3, Fc Tag (ABIN6992329) at 1 µg/mL (100 µL/well) can bind Bispecific Antibody (NOTCH2 x NOTCH3) with a linear range of 2-20 ng/mL (QC tested).



SDS-PAGE

Image 2. Human NOTCH3, Fc Tag on under reducing (R) condition. The gel was stained overnight with Coomassie Blue. The purity of the protein is greater than 95 % .