



[Go to Product page](#)

Datasheet for ABIN6992330

CD56 Protein (AA 20-718) (His tag)

2 Images

Overview

Quantity:	100 µg
Target:	CD56 (NCAM1)
Protein Characteristics:	AA 20-718
Origin:	Human
Source:	HEK-293 Cells
Protein Type:	Recombinant
Biological Activity:	Active
Purification tag / Conjugate:	This CD56 protein is labelled with His tag.

Product Details

Purpose:	Human NCAM-1 / CD56 Protein, His Tag (MALS verified)
Purity:	>95 % as determined by SDS-PAGE.
Endotoxin Level:	Less than 1.0 EU per µg by the LAL method.

Target Details

Target:	CD56 (NCAM1)
Alternative Name:	NCAM-1 (NCAM1 Products)
Background:	NCAM1 belongs to the immunoglobulin superfamily of adhesion molecules. A wide range of alternatively spliced NCAM1 messenger RNAs (mRNAs) has been described to date, but only the 120-, 140-, and 180- kDa isoforms are commonly expressed. NCAM1 plays an important role in the regulation of neurogenesis, neurite outgrowth, proliferation, and cell migration,

Target Details

however, its function in hematopoiesis, including NK cells, is poorly understood. NCAM1 signaling is mediated either by homophilic or heterophilic interactions with fibroblast growth factor receptor (FGFR), L1-CAM, N-cadherin and other components of the extracellular matrix. Upon activation, NCAM1 triggers a variety of signaling cascades including FYN-focal adhesion kinase (FAK), MAPK, and phosphatidylinositol 3-kinase (PI3K) pathways.

Molecular Weight: 79.3 kDa

NCBI Accession: [NP_851996](#)

Application Details

Restrictions: For Research Use only

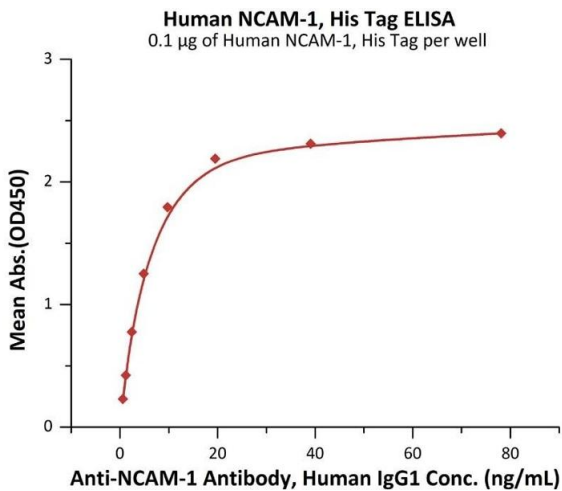
Handling

Format: Lyophilized

Buffer: 50 mM Tris, 500 mM NaCl, pH 8.0

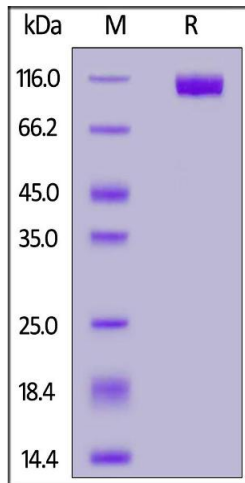
Storage: -20 °C

Images



ELISA

Image 1. Immobilized Human NCAM-1, His Tag (ABIN6992330) at 1 µg/mL (100 µL/well) can bind A-1 Antibody, Human IgG1 with a linear range of 0.6-10 ng/mL (QC tested).



SDS-PAGE

Image 2. Human NCAM-1, His Tag on under reducing (R) condition. The gel was stained overnight with Coomassie Blue. The purity of the protein is greater than 95 % .