

Datasheet for ABIN6992334  
**HGF Protein (AA 32-728) (Fc Tag)**



[Go to Product page](#)

2 Images

## Overview

Quantity:	100 µg
Target:	HGF
Protein Characteristics:	AA 32-728
Origin:	Human
Source:	HEK-293 Cells
Protein Type:	Recombinant
Biological Activity:	Active
Purification tag / Conjugate:	This HGF protein is labelled with Fc Tag.

## Product Details

Purpose:	Human HGF Protein, Fc Tag (MALS verified)
Purity:	>90 % as determined by SDS-PAGE.
Endotoxin Level:	Less than 1.0 EU per µg by the LAL method.

## Target Details

Target:	HGF
Alternative Name:	HGF ( <a href="#">HGF Products</a> )
Background:	Hepatocyte growth factor (HGF) is a paracrine cellular growth, motility and morphogenic factor. Activating ligand for the receptor tyrosine kinase MET by binding to it and promoting its dimerization. Hepatocyte growth factor is secreted by mesenchymal cells and acts as a multi-functional cytokine on cells of mainly epithelial origin. Its ability to stimulate mitogenesis, cell

## Target Details

motility, and matrix invasion gives it a central role in angiogenesis, tumorigenesis, and tissue regeneration. In addition, HGF has been implicated in a variety of cancers, including of the lungs, pancreas, thyroid, colon, and breast.

Molecular Weight: 106.1 kDa

NCBI Accession: [NP\\_000592](#)

Pathways: [RTK Signaling](#), [Carbohydrate Homeostasis](#), [Glycosaminoglycan Metabolic Process](#), [Synaptic Membrane](#), [Signaling of Hepatocyte Growth Factor Receptor](#)

## Application Details

Restrictions: For Research Use only

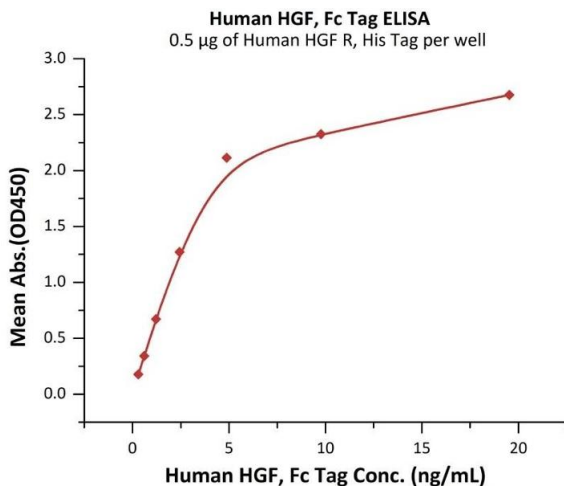
## Handling

Format: Lyophilized

Buffer: 50 mM Tris, 100 mM Glycine, 150 mM NaCl, pH 7.5

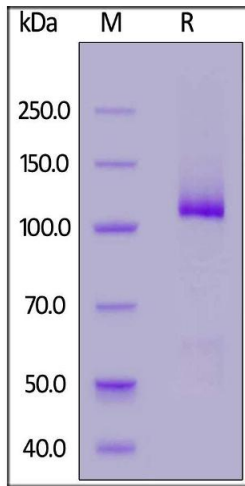
Storage: -20 °C

## Images



### ELISA

**Image 1.** Immobilized Human HGF R, His Tag (ABIN2180660, ABIN2180659) at 5 µg/mL (100 µL/well) can bind Human HGF, Fc Tag (ABIN6992334) with a linear range of 1.2-5 ng/mL (QC tested).



### SDS-PAGE

**Image 2.** Human HGF, Fc Tag on under reducing (R) condition. The gel was stained overnight with Coomassie Blue. The purity of the protein is greater than 90 % .