

Datasheet for ABIN6992347

HBEGF Protein (AA 63-148) (His tag)[Go to Product page](#)**2** Images

Overview

Quantity:	100 µg
Target:	HBEGF
Protein Characteristics:	AA 63-148
Origin:	Human
Source:	HEK-293 Cells
Protein Type:	Recombinant
Biological Activity:	Active
Purification tag / Conjugate:	This HBEGF protein is labelled with His tag.

Product Details

Purpose:	Human HBEGF Protein, His Tag
Purity:	>90 % as determined by SDS-PAGE.
Endotoxin Level:	Less than 1.0 EU per µg by the LAL method.

Target Details

Target:	HBEGF
Alternative Name:	HBEGF (HBEGF Products)
Background:	Heparin-binding epidermal growth factor (EGF)-like growth factor (HBEGF) is a ligand for the EGF receptor (EGFR) and a critical molecular component to a number of normal physiological processes including but not limited to tissue injury and wound healing, reproduction, angiogenesis and recently, adipogenesis. Misexpression of HB-EGF is linked to tumor formation

Target Details

	and cancer including hepatocellular, pancreatic, gastric, breast, colon and melanoma, gliomas and glioblastomas.
Molecular Weight:	11.8 kDa
NCBI Accession:	NP_001936
Pathways:	RTK Signaling , Fc-epsilon Receptor Signaling Pathway , EGFR Signaling Pathway , Neurotrophin Signaling Pathway

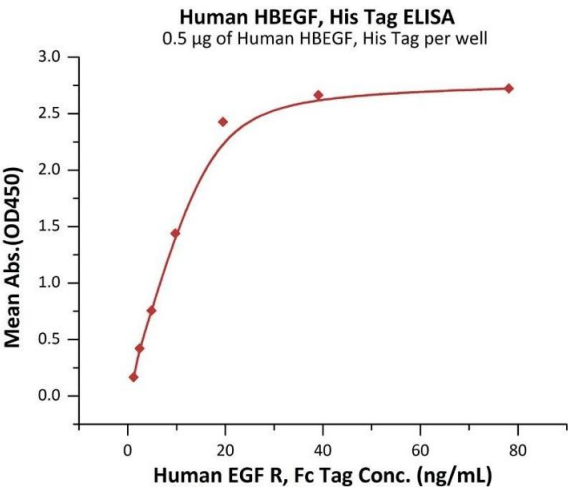
Application Details

Restrictions:	For Research Use only
---------------	-----------------------

Handling

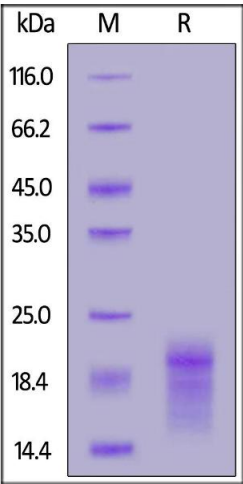
Format:	Lyophilized
Buffer:	PBS, pH 7.4
Storage:	-20 °C

Images



ELISA

Image 1. Immobilized Human HBEGF, His Tag (ABIN6992347) at 5 µg/mL (100 µL/well) can bind Human EGF R, Fc Tag (ABIN2181001,ABIN2181000) with a linear range of 1-20 ng/mL (QC tested).



SDS-PAGE

Image 2. Human HBEGF, His Tag on under reducing (R) condition. The gel was stained overnight with Coomassie Blue. The purity of the protein is greater than 90 % .