

Datasheet for ABIN6992382

**PD-1 Protein (AA 25-167) (His tag)**[Go to Product page](#)**3** Images

## Overview

Quantity:	100 µg
Target:	PD-1 (PDCD1)
Protein Characteristics:	AA 25-167
Origin:	Rhesus Monkey
Source:	HEK-293 Cells
Protein Type:	Recombinant
Biological Activity:	Active
Purification tag / Conjugate:	This PD-1 protein is labelled with His tag.

## Product Details

Purpose:	Rhesus macaque PD-1 / PDCD1 Protein, His Tag (MALS verified)
Purity:	>90 % as determined by SDS-PAGE.
Endotoxin Level:	Less than 1.0 EU per µg by the LAL method.

## Target Details

Target:	PD-1 (PDCD1)
Alternative Name:	PD-1 ( <a href="#">PDCD1 Products</a> )
Background:	Programmed cell death protein 1 (PD-1) is also known as CD279 and PDCD1, is a type I membrane protein and is a member of the extended CD28/CTLA-4 family of T cell regulators. PDCD1 is expressed on the surface of activated T cells, B cells, macrophages, myeloid cells and a subset of thymocytes. PD-1 has two ligands, PD-L1 and PD-L2, which are members of the B7

## Target Details

family. PD-L1 is expressed on almost all murine tumor cell lines, including PA1 myeloma, P815 mastocytoma, and B16 melanoma upon treatment with IFN- $\gamma$ . PD-L2 expression is more restricted and is expressed mainly by DCs and a few tumor lines. PD1 inhibits the T-cell proliferation and production of related cytokines including IL-1, IL-4, IL-10 and IFN- $\gamma$  by suppressing the activation and transduction of PI3K/AKT pathway. In addition, coligation of PD1 inhibits BCR-mediated signal by dephosphorylating key signal transducer. In vitro, treatment of anti-CD3 stimulated T cells with PD-L1-Ig results in reduced T cell proliferation and IFN- $\gamma$  secretion. Monoclonal antibodies targeting PD-1 that boost the immune system are being developed for the treatment of cancer.

Molecular Weight: 17.9 kDa

NCBI Accession: [NP\\_001107830](#)

Pathways: [Cancer Immune Checkpoints](#)

## Application Details

Restrictions: For Research Use only

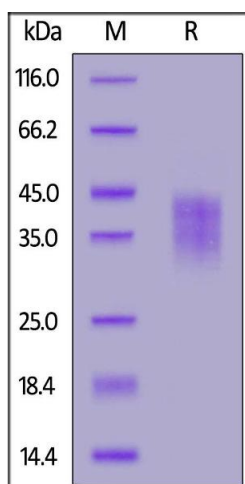
## Handling

Format: Lyophilized

Buffer: PBS, pH 7.4

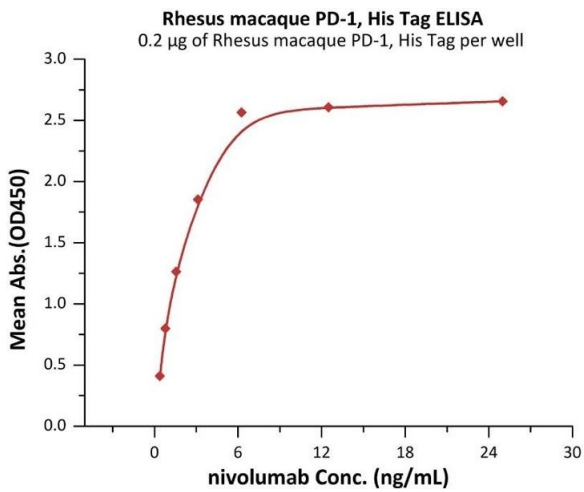
Storage: -20 °C

## Images



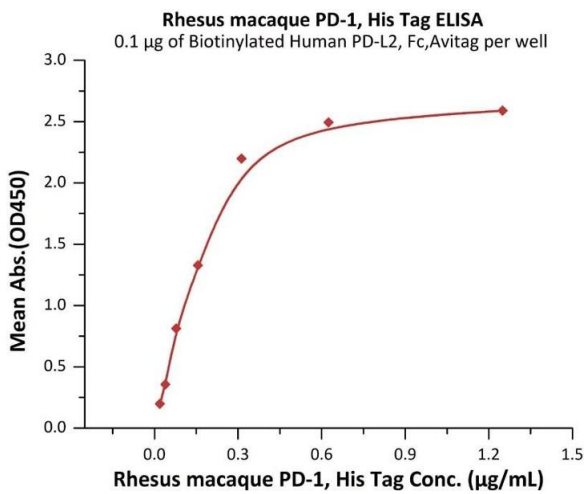
### SDS-PAGE

**Image 1.** Rhesus macaque PD-1, His Tag on under reducing (R) condition. The gel was stained overnight with Coomassie Blue. The purity of the protein is greater than 90 %.



**ELISA**

**Image 2.** Immobilized Rhesus macaque PD-1, His Tag (ABIN6992382) at 2 µg/mL (100 µL/well) can bind nivolumab with a linear range of 0.1-3 ng/mL (QC tested).



**ELISA**

**Image 3.** Immobilized Biotinylated Human PD-L2, Fc,Avitag (ABIN2870562,ABIN2870563) at 1 µg/mL (100 µL/well) on streptavidin precoated (0.5 µg/well) plate can bind Rhesus macaque PD-1, His Tag (ABIN6992382) with a linear range of 0.01-0.313 µg/mL (Routinely tested).