

Datasheet for ABIN6992390

IL2 Receptor beta Protein (AA 27-240) (His tag)



[Go to Product page](#)

1 Image

Overview

Quantity:	50 µg
Target:	IL2 Receptor beta (IL2RB)
Protein Characteristics:	AA 27-240
Origin:	Mouse
Source:	HEK-293 Cells
Protein Type:	Recombinant
Purification tag / Conjugate:	This IL2 Receptor beta protein is labelled with His tag.

Product Details

Purpose:	Mouse IL-2 R beta Protein, His Tag
Purity:	>95 % as determined by SDS-PAGE.
Endotoxin Level:	Less than 1.0 EU per µg by the LAL method.

Target Details

Target:	IL2 Receptor beta (IL2RB)
Alternative Name:	IL-2 R beta (IL2RB Products)
Background:	Interleukin-2 receptor subunit beta (IL2RB) is also known as CD122, which belongs to the type I cytokine receptor family. Type 4 subfamily. IL2RB contains 1 fibronectin type-III domain. IL2RB / CD122 is involved in T cell-mediated immune responses, is present in 3 forms with respect to ability to bind interleukin 2. The low affinity form is a monomer of the alpha subunit and is not involved in signal transduction. The intermediate affinity form consists of an alpha/beta subunit

Target Details

heterodimer, while the high affinity form consists of an alpha/beta/gamma subunit heterotrimer. Both the intermediate and high affinity forms of the receptor are involved in receptor-mediated endocytosis and transduction of mitogenic signals from interleukin 2.

Molecular Weight:	27.1 kDa
NCBI Accession:	NP_032394
Pathways:	JAK-STAT Signaling , Growth Factor Binding

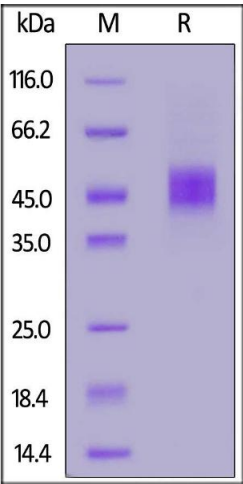
Application Details

Restrictions:	For Research Use only
---------------	-----------------------

Handling

Format:	Lyophilized
Buffer:	PBS, pH 7.4
Storage:	-20 °C

Images



SDS-PAGE

Image 1. Mouse IL-2 R beta, His Tag on under reducing (R) condition. The gel was stained overnight with Coomassie Blue. The purity of the protein is greater than 95 % .