



[Go to Product page](#)

Datasheet for ABIN6992401

SARS-CoV-2 Spike Protein (P.1 - gamma, RBD) (Fc Tag)

3 Images

Overview

Quantity:	100 µg
Target:	SARS-CoV-2 Spike
Protein Characteristics:	P.1 - gamma, RBD
Origin:	SARS Coronavirus-2 (SARS-CoV-2), SARS CoV-2 Gamma
Source:	HEK-293 Cells
Protein Type:	Recombinant
Biological Activity:	Active
Purification tag / Conjugate:	This SARS-CoV-2 Spike protein is labelled with Fc Tag.

Product Details

Purpose:	SARS-CoV-2 S protein RBD (K417T, E484K, N501Y), Fc Tag (MALS verified)
Sequence:	AA 319-537
Characteristics:	SARS-CoV-2 S protein RBD (K417T,E484K,N501Y), Fc Tag is expressed from human 293 cells (HEK293). It contains AA Arg 319 - Lys 537 (Accession # QHD43416.1 (K417T, E484K, N501Y). The K417T, E484K, N501Y mutations were identified in the SARS-CoV-2 variant (known as P.1) which emerged in Brazil.
Purity:	>95 % as determined by SDS-PAGE.
Endotoxin Level:	Less than 1.0 EU per µg by the LAL method.

Target Details

Target:	SARS-CoV-2 Spike
---------	------------------

Target Details

Alternative Name: SARS-CoV-2 S protein ([SARS-CoV-2 Spike Products](#))

Target Type: Viral Protein

Background: It's been reported that Coronavirus can infect the human respiratory epithelial cells through interaction with the human ACE2 receptor. The spike protein is a large type I transmembrane protein containing two subunits, S1 and S2. S1 mainly contains a receptor binding domain (RBD), which is responsible for recognizing the cell surface receptor. S2 contains basic elements needed for the membrane fusion. The S protein plays key parts in the induction of neutralizing-antibody and T-cell responses, as well as protective immunity.

Molecular Weight: 51.1 kDa

Application Details

Restrictions: For Research Use only

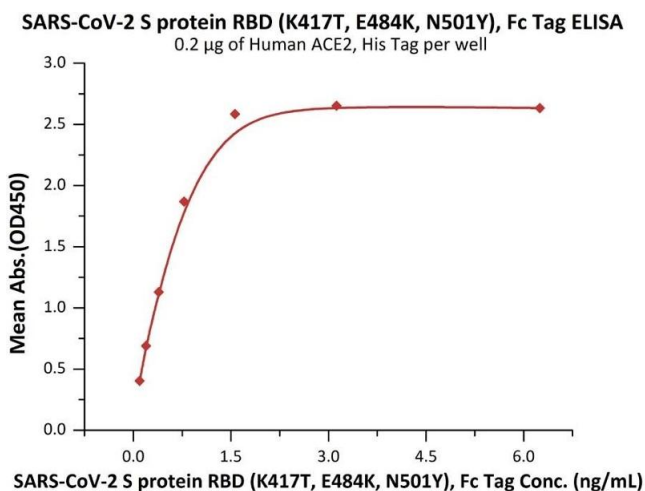
Handling

Format: Lyophilized

Buffer: 50 mM Tris, 100 mM Glycine, 25 mM Arginine, 150 mM NaCl, pH 7.5

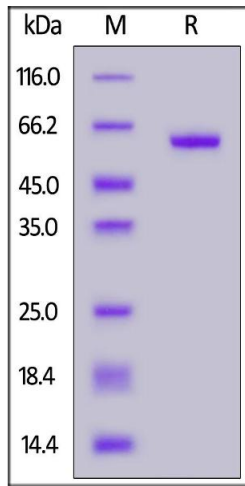
Storage: -20 °C

Images



ELISA

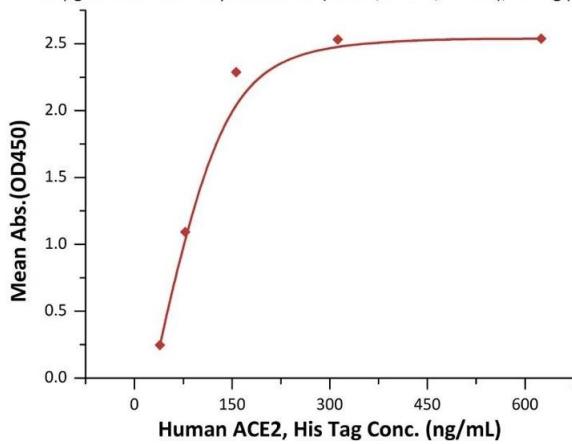
Image 1. Immobilized Human ACE2, His Tag (ABIN6952618, ABIN6952641) at 2 µg/mL (100 µL/well) can bind SARS-CoV-2 S protein RBD (K417T, E484K, N501Y), Fc Tag (ABIN6992401) with a linear range of 0.1-0.8 ng/mL (Routinely tested).



SDS-PAGE

Image 2. SARS-CoV-2 S protein RBD (K417T, E484K, N501Y), Fc Tag on under reducing (R) condition. The gel was stained overnight with Coomassie Blue. The purity of the protein is greater than 95 % .

SARS-CoV-2 S protein RBD (K417T, E484K, N501Y), Fc Tag ELISA
 0.2 µg of SARS-CoV-2 S protein RBD (K417T, E484K, N501Y), Fc Tag per well



ELISA

Image 3. Immobilized SARS-CoV-2 S protein RBD (K417T, E484K, N501Y), Fc Tag (ABIN6992401) at 2 µg/mL (100 µ L/well) can bind Human ACE2, His Tag (ABIN6952618, ABIN6952641) with a linear range of 39-156 ng/mL (QC tested).