



[Go to Product page](#)

Datasheet for ABIN6992402

SARS-CoV-2 Spike S1 Protein (P.1 - gamma) (Fc Tag)

3 Images

Overview

Quantity:	100 µg
Target:	SARS-CoV-2 Spike S1
Protein Characteristics:	P.1 - gamma
Origin:	SARS Coronavirus-2 (SARS-CoV-2), SARS CoV-2 Gamma
Source:	HEK-293 Cells
Protein Type:	Recombinant
Biological Activity:	Active
Purification tag / Conjugate:	This SARS-CoV-2 Spike S1 protein is labelled with Fc Tag.

Product Details

Purpose:	SARS-CoV-2 S1 protein (L18F, T20N, P26S, D138Y, R190S, K417T, E484K, N501Y, D614G, H655Y), Fc Tag
Sequence:	AA 16-685
Characteristics:	SARS-CoV-2 S1 protein, Fc Tag is expressed from human 293 cells (HEK293). It contains AA Val 16 - Arg 685 (Accession # QHD43416.1). The mutations (L18F, T20N, P26S, D138Y, R190S, K417T, E484K, N501Y, D614G, H655Y) were identified in the SARS-CoV-2 variant (known as P.1) which emerged in Brazil.
Purity:	>95 % as determined by SDS-PAGE.
Endotoxin Level:	Less than 1.0 EU per µg by the LAL method.

Target Details

Target:	SARS-CoV-2 Spike S1
Alternative Name:	SARS-CoV-2 S1 protein (SARS-CoV-2 Spike S1 Products)
Target Type:	Viral Protein
Background:	It's been reported that Coronavirus can infect the human respiratory epithelial cells through interaction with the human ACE2 receptor. The spike protein is a large type I transmembrane protein containing two subunits, S1 and S2. S1 mainly contains a receptor binding domain (RBD), which is responsible for recognizing the cell surface receptor. S2 contains basic elements needed for the membrane fusion. The S protein plays key parts in the induction of neutralizing-antibody and T-cell responses, as well as protective immunity.
Molecular Weight:	101.5 kDa

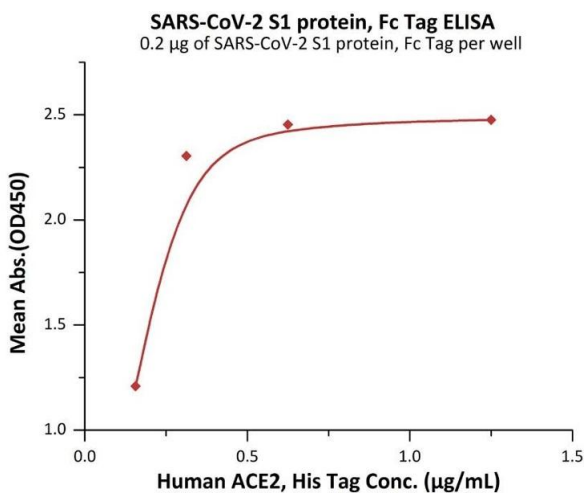
Application Details

Restrictions:	For Research Use only
---------------	-----------------------

Handling

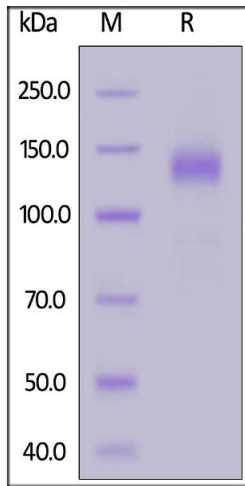
Format:	Lyophilized
Buffer:	50 mM Tris, 100 mM Glycine, 25 mM Arginine, 150 mM NaCl, pH 7.5
Storage:	-20 °C

Images



ELISA

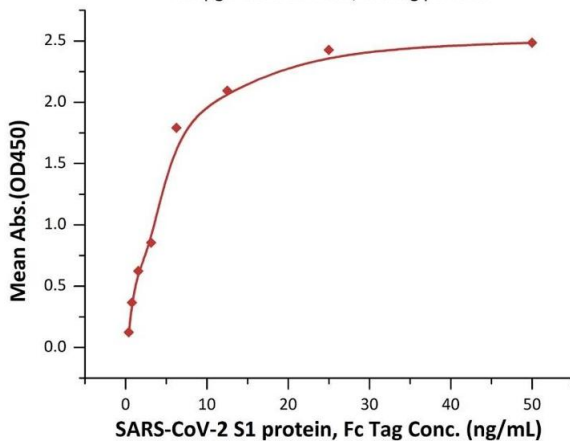
Image 1. Immobilized SARS-CoV-2 S1 protein, Fc Tag (ABIN6992402) at 2 µg/mL (100 µL/well) can bind Human ACE2, His Tag (ABIN6952618, ABIN6952641) with a linear range of 0.2-0.3 µg/mL (Routinely tested).



SDS-PAGE

Image 2. SARS-CoV-2 S1 protein, Fc Tag on under reducing (R) condition. The gel was stained overnight with Coomassie Blue. The purity of the protein is greater than 95 % .

SARS-CoV-2 S1 protein, Fc Tag ELISA
0.2 µg of Human ACE2, His Tag per well



ELISA

Image 3. Immobilized Human ACE2, His Tag (ABIN6952618,ABIN6952641) at 2 µg/mL (100 µL/well) can bind SARS-CoV-2 S1 protein, Fc Tag (ABIN6992402) with a linear range of 0.4-6 ng/mL (QC tested).