

Datasheet for ABIN6992405

**SLC39A6 Protein (AA 21-309) (His tag)**[Go to Product page](#)**2** Images

## Overview

Quantity:	100 µg
Target:	SLC39A6
Protein Characteristics:	AA 21-309
Origin:	Cynomolgus
Source:	HEK-293 Cells
Protein Type:	Recombinant
Biological Activity:	Active
Purification tag / Conjugate:	This SLC39A6 protein is labelled with His tag.

## Product Details

Purpose:	Cynomolgus LIV-1 / SLC39A6 Protein, His Tag
Purity:	>95 % as determined by SDS-PAGE.
Endotoxin Level:	Less than 1.0 EU per µg by the LAL method.

## Target Details

Target:	SLC39A6
Alternative Name:	LIV-1 ( <a href="#">SLC39A6 Products</a> )
Background:	LIV-1 is also known as SLC39A6, ZIP-6 and Zinc transporter ZIP6. May act as a zinc-influx transporter. Highly expressed in the breast, prostate, placenta, kidney, pituitary and corpus callosum. Weakly expressed in heart and intestine. Also highly expressed in cells derived from an adenocarcinoma of the cervix and lung carcinoma. Up-regulated by estrogen in breast

Target Details

	cancer cells lines.
Molecular Weight:	34.5 kDa
NCBI Accession:	<a href="#">XP_005586923</a>
Pathways:	<a href="#">Transition Metal Ion Homeostasis</a>

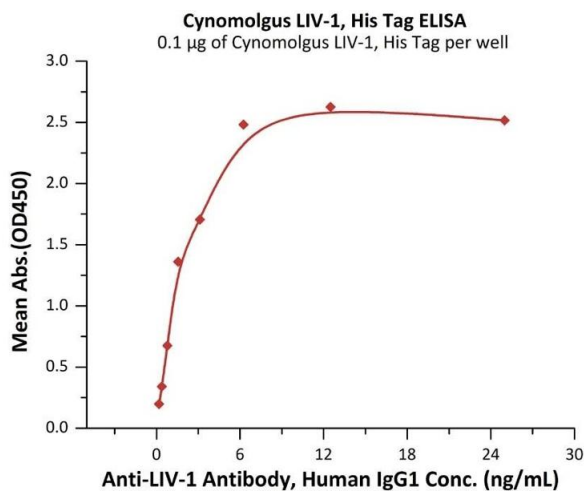
Application Details

Restrictions:	For Research Use only
---------------	-----------------------

Handling

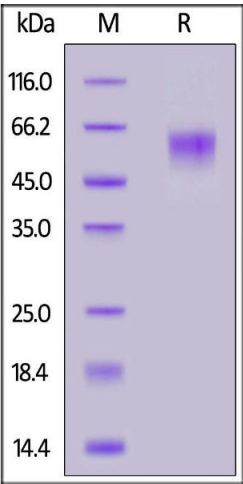
Format:	Lyophilized
Buffer:	PBS, pH 7.4
Storage:	-20 °C

Images



**ELISA**

**Image 1.** Immobilized Cynomolgus LIV-1, His Tag (ABIN6992405) at 1 µg/mL (100 µL/well) can bind Anti-LIV-1 Antibody, Human IgG1 with a linear range of 0.2-2 ng/mL (QC tested).



SDS-PAGE

**Image 2.** Cynomolgus LIV-1, His Tag on under reducing (R) condition. The gel was stained overnight with Coomassie Blue. The purity of the protein is greater than 95 % .