



Datasheet for ABIN6992465

anti-IFNA antibody



[Go to Product page](#)

1 Image

Overview

Quantity:	50 tests
Target:	IFNA
Reactivity:	Rat
Host:	Rabbit
Clonality:	Polyclonal
Conjugate:	This IFNA antibody is un-conjugated
Application:	Flow Cytometry (FACS)

Product Details

Purpose:	Anti-Interferon Alpha (IFNa) Polyclonal Antibody
Immunogen:	Recombinant Interferon Alpha (IFNa)
Isotype:	IgG
Purification:	Antigen-specific affinity chromatography followed by Protein A affinity chromatography

Target Details

Target:	IFNA
Alternative Name:	Interferon Alpha (IFNA Products)
Background:	IFNA1, IFL, LeIF D, IFN, IFN-Alpha, IFNA13, IFN-A, IFNAP22, IFN-Alpha 1b, Interferon Alpha 1b, Interferon, Leukocytic, IFN, Leukocyte, Interferon alpha-D
Pathways:	JAK-STAT Signaling , TLR Signaling , Hepatitis C , Inflammasome

Application Details

Application Notes: For flow cytometry, the suggested use of this reagent is 1-5 μL per 10^6 cells in 100 μL volume. Optimal working dilutions could be determined by end user.

Restrictions: For Research Use only

Handling

Format: Liquid

Buffer: 0.01M PBS, pH 7.4, containing 0.05 % Proclin-300, 50 % glycerol.

Preservative: ProClin

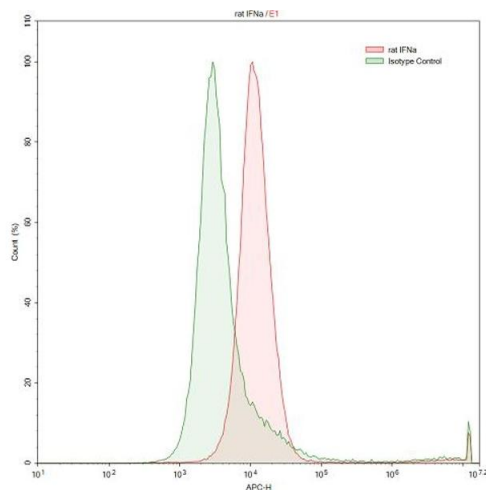
Precaution of Use: This product contains ProClin: a POISONOUS AND HAZARDOUS SUBSTANCE which should be handled by trained staff only.

Storage: 4 °C, -20 °C

Storage Comment: Store at 4°C for frequent use. Stored at -20°C in a manual defrost freezer for one year without detectable loss of activity. Avoid repeated freeze-thaw cycles.

Expiry Date: 12 months

Images



Flow Cytometry

Image 1. Detection of IFNa in Raji human Burkitt's lymphoma cell line using Anti-Interferon Alpha (IFNa) Polyclonal Antibody