



[Go to Product page](#)

Datasheet for ABIN6992483
anti-C1QBP antibody (AA 76-282)

1 Image

Overview

Quantity:	50 tests
Target:	C1QBP
Binding Specificity:	AA 76-282
Reactivity:	Human
Host:	Rabbit
Clonality:	Polyclonal
Conjugate:	This C1QBP antibody is un-conjugated
Application:	Flow Cytometry (FACS)

Product Details

Purpose:	Anti-Complement component 1 Q subcomponent-binding protein, mitochondrial (C1QBP) Polyclonal Antibody
Immunogen:	Recombinant Complement component 1 Q subcomponent-binding protein, mitochondrial (C1QBP) corresponding to Thr76~Gln282 with N-terminal His Tag
Isotype:	IgG
Purification:	Antigen-specific affinity chromatography followed by Protein A affinity chromatography

Target Details

Target:	C1QBP
Alternative Name:	Complement component 1 Q subcomponent-binding protein, mitochondrial (C1QBP Products)

Target Details

Background:	HABP1, GC1QBP, SF2p32, GC1Q-R, GC1qR, P32, Hyaluronan Binding Protein 1, Splicing Factor SF2-Associated Protein, ASF/SF2-associated p32
Pathways:	Ribonucleoprotein Complex Subunit Organization , Ribosome Assembly

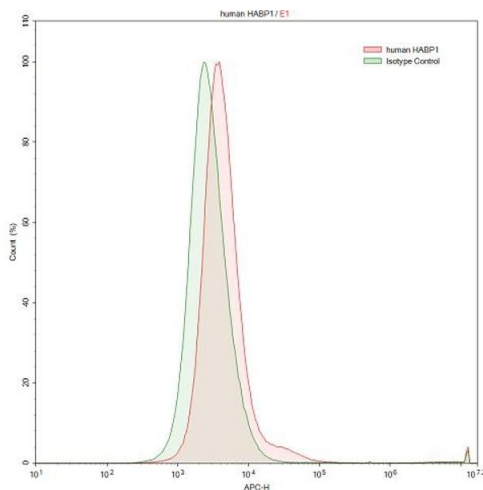
Application Details

Application Notes:	For flow cytometry, the suggested use of this reagent is 1-5 μ L per 10^6 cells in 100 μ L volume. Optimal working dilutions could be determined by end user.
Restrictions:	For Research Use only

Handling

Format:	Liquid
Buffer:	0.01M PBS, pH 7.4, containing 0.05 % Proclin-300, 50 % glycerol.
Preservative:	ProClin
Precaution of Use:	This product contains ProClin: a POISONOUS AND HAZARDOUS SUBSTANCE which should be handled by trained staff only.
Storage:	4 °C, -20 °C
Storage Comment:	Store at 4°C for frequent use. Stored at -20°C in a manual defrost freezer for one year without detectable loss of activity. Avoid repeated freeze-thaw cycles.
Expiry Date:	12 months

Images



Flow Cytometry

Image 1. Detection of C1QBP in U937 human histiocytic lymphoma cell line using Anti-Complement component 1 Q subcomponent-binding protein, mitochondrial (C1QBP) Polyclonal Antibody