

Datasheet for ABIN6992496

**anti-Complement C4 antibody (AA 1450-1723)**[Go to Product page](#)**1** Image

## Overview

Quantity:	50 tests
Target:	Complement C4 (C4)
Binding Specificity:	AA 1450-1723
Reactivity:	Mouse
Host:	Rabbit
Clonality:	Polyclonal
Application:	Flow Cytometry (FACS)

## Product Details

Purpose:	Anti-Complement Component 4 (C4) Polyclonal Antibody
Immunogen:	Recombinant Complement Component 4 (C4) corresponding to Pro1450~Gln1723 with N-terminal His Tag
Isotype:	IgG
Purification:	Antigen-specific affinity chromatography followed by Protein A affinity chromatography

## Target Details

Target:	Complement C4 (C4)
Alternative Name:	Complement Component 4 ( <a href="#">C4 Products</a> )
Pathways:	<a href="#">Complement System</a>

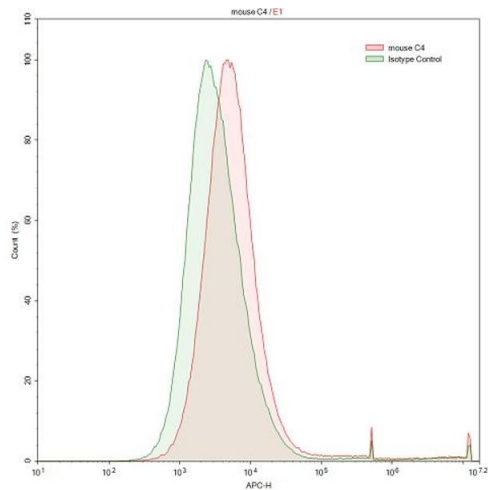
## Application Details

Application Notes:	For flow cytometry, the suggested use of this reagent is 1-5 µL per 10 <sup>6</sup> cells in 100 µL volume. Optimal working dilutions could be determined by end user.
Restrictions:	For Research Use only

## Handling

Format:	Liquid
Buffer:	0.01M PBS, pH 7.4, containing 0.05 % Proclin-300, 50 % glycerol.
Preservative:	ProClin
Precaution of Use:	This product contains ProClin: a POISONOUS AND HAZARDOUS SUBSTANCE which should be handled by trained staff only.
Storage:	4 °C,-20 °C
Storage Comment:	Store at 4°C for frequent use. Stored at -20°C in a manual defrost freezer for one year without detectable loss of activity. Avoid repeated freeze-thaw cycles.
Expiry Date:	12 months

## Images



### Flow Cytometry

**Image 1.** Detection of C4 in HepG2 human hepatocellular carcinoma cell line using Anti-Complement Component 4 (C4) Polyclonal Antibody