

Datasheet for ABIN6992500
anti-HSPA1L antibody (AA 1-641)[Go to Product page](#)

1 Image

Overview

Quantity:	50 tests
Target:	HSPA1L
Binding Specificity:	AA 1-641
Reactivity:	Human
Host:	Rabbit
Clonality:	Polyclonal
Conjugate:	This HSPA1L antibody is un-conjugated
Application:	Flow Cytometry (FACS)

Product Details

Purpose:	Anti-Heat Shock 70kDa Protein 1 Like Protein (HSPA1L) Polyclonal Antibody
Immunogen:	Recombinant Heat Shock 70kDa Protein 1 Like Protein (HSPA1L) corresponding to Met1~Asp641 with N-terminal His Tag
Isotype:	IgG
Purification:	Antigen-specific affinity chromatography followed by Protein A affinity chromatography

Target Details

Target:	HSPA1L
Alternative Name:	Heat Shock 70kDa Protein 1 Like Protein (HSPA1L Products)
Background:	HSP-A1L, HSPA1-L, HSP70-HOM, Hum70t

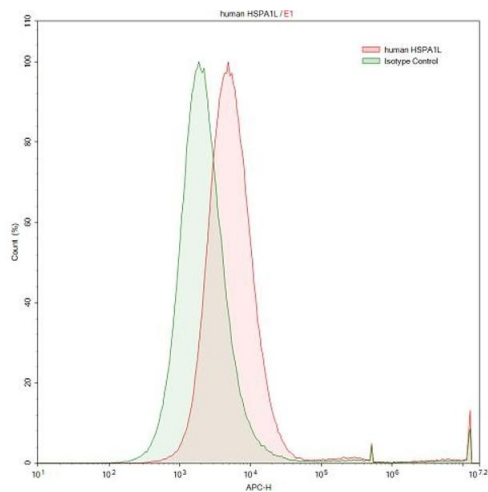
Application Details

Application Notes:	For flow cytometry, the suggested use of this reagent is 1-5 µL per 10 ⁶ cells in 100 µL volume. Optimal working dilutions could be determined by end user.
Restrictions:	For Research Use only

Handling

Format:	Liquid
Buffer:	0.01M PBS, pH 7.4, containing 0.05 % Proclin-300, 50 % glycerol.
Preservative:	ProClin
Precaution of Use:	This product contains ProClin: a POISONOUS AND HAZARDOUS SUBSTANCE which should be handled by trained staff only.
Storage:	4 °C,-20 °C
Storage Comment:	Store at 4°C for frequent use. Stored at -20°C in a manual defrost freezer for one year without detectable loss of activity. Avoid repeated freeze-thaw cycles.
Expiry Date:	12 months

Images



Flow Cytometry

Image 1. Detection of HSPA1L in Raji human Burkitt's lymphoma cell line using Anti-Heat Shock 70 kDa Protein 1 Like Protein (HSPA1L) Polyclonal Antibody