

Datasheet for ABIN6992513
anti-CD236/GYPC antibody (AA 1-128)[Go to Product page](#)

1 Image

Overview

Quantity:	50 tests
Target:	CD236/GYPC (GYPC)
Binding Specificity:	AA 1-128
Reactivity:	Human
Host:	Rabbit
Clonality:	Polyclonal
Conjugate:	This CD236/GYPC antibody is un-conjugated
Application:	Flow Cytometry (FACS)

Product Details

Purpose:	Anti-Glycophorin C (GYPC) Polyclonal Antibody
Immunogen:	Recombinant Glycophorin C (GYPC) corresponding to Met1~Ile128 with N-terminal His and GST Tag
Isotype:	IgG
Purification:	Antigen-specific affinity chromatography followed by Protein A affinity chromatography

Target Details

Target:	CD236/GYPC (GYPC)
Alternative Name:	Glycophorin C (GYPC Products)
Target Type:	Viral Protein

Target Details

Background:	CD236, CD236R, GYP-C, PAS-2, GPC, GYPD, Ge, Glycoprotein Beta, Glycoconnectin, Gerbich Blood Group, Glycophorin-D, Sialoglycoprotein D
-------------	--

Application Details

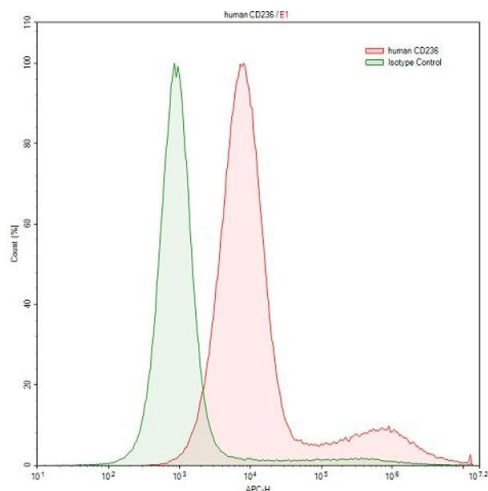
Application Notes:	For flow cytometry, the suggested use of this reagent is 1-5 μ L per 10^6 cells in 100 μ L volume. Optimal working dilutions could be determined by end user.
--------------------	---

Restrictions:	For Research Use only
---------------	-----------------------

Handling

Format:	Liquid
Buffer:	0.01M PBS, pH 7.4, containing 0.05 % Proclin-300, 50 % glycerol.
Preservative:	ProClin
Precaution of Use:	This product contains ProClin: a POISONOUS AND HAZARDOUS SUBSTANCE which should be handled by trained staff only.
Storage:	4 °C, -20 °C
Storage Comment:	Store at 4°C for frequent use. Stored at -20°C in a manual defrost freezer for one year without detectable loss of activity. Avoid repeated freeze-thaw cycles.
Expiry Date:	12 months

Images



Flow Cytometry

Image 1. Detection of GYPC in K562 human chronic myelogenous leukemia cell line using Anti-Glycophorin C (GYPC) Polyclonal Antibody