

Datasheet for ABIN6992522

anti-MCL-1 antibody (AA 6-328)



[Go to Product page](#)

1 Image

Overview

Quantity:	50 tests
Target:	MCL-1 (MCL1)
Binding Specificity:	AA 6-328
Reactivity:	Human
Host:	Rabbit
Clonality:	Polyclonal
Conjugate:	This MCL-1 antibody is un-conjugated
Application:	Flow Cytometry (FACS)

Product Details

Purpose:	Anti-Induced Myeloid Leukemia Cell Differentiation Protein Mcl-1 (MCL1) Polyclonal Antibody
Immunogen:	Recombinant Induced Myeloid Leukemia Cell Differentiation Protein Mcl-1 (MCL1) corresponding to Arg6~Ile328 with N-terminal His Tag
Isotype:	IgG
Purification:	Antigen-specific affinity chromatography followed by Protein A affinity chromatography

Target Details

Target:	MCL-1 (MCL1)
Alternative Name:	Induced Myeloid Leukemia Cell Differentiation Protein Mcl-1 (MCL1 Products)
Background:	EAT, MCL1L, MCL1S, BCL2L3, TM, Myeloid Cell Leukemia Sequence 1, Bcl2 Related, Bcl-2-like

Target Details

	protein 3, Bcl-2-related protein EAT/mcl1, mcl1/EAT
UniProt:	Q07820
Pathways:	MAPK Signaling

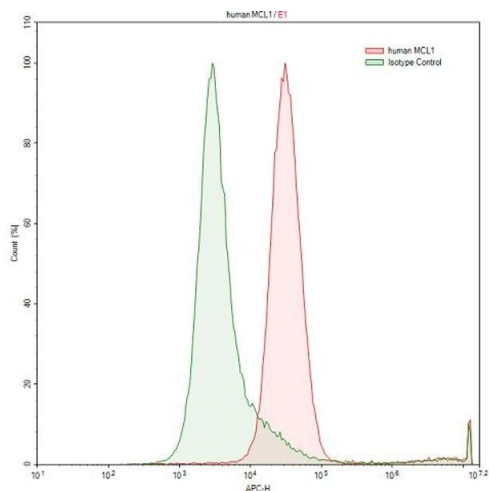
Application Details

Application Notes:	For flow cytometry, the suggested use of this reagent is 1-5 µL per 10^6 cells in 100 µL volume. Optimal working dilutions could be determined by end user.
Restrictions:	For Research Use only

Handling

Format:	Liquid
Buffer:	0.01M PBS, pH 7.4, containing 0.05 % Proclin-300, 50 % glycerol.
Preservative:	ProClin
Precaution of Use:	This product contains ProClin: a POISONOUS AND HAZARDOUS SUBSTANCE which should be handled by trained staff only.
Storage:	4 °C,-20 °C
Storage Comment:	Store at 4°C for frequent use. Stored at -20°C in a manual defrost freezer for one year without detectable loss of activity. Avoid repeated freeze-thaw cycles.
Expiry Date:	12 months

Images



Flow Cytometry

Image 1. Detection of MCL1 in Raji human Burkitt's lymphoma cell line using Anti-Induced Myeloid Leukemia Cell Differentiation Protein Mcl-1 (MCL1) Polyclonal Antibody