

Datasheet for ABIN6999649

anti-BCL2L1 antibody

4 Images

[Go to Product page](#)

Overview

Quantity:	20 µL
Target:	BCL2L1
Reactivity:	Human, Mouse, Rat
Host:	Rabbit
Clonality:	Polyclonal
Conjugate:	This BCL2L1 antibody is un-conjugated
Application:	Western Blotting (WB), Immunohistochemistry (IHC)

Product Details

Immunogen:	Recombinant human Bcl-2-like protein 1 protein
Isotype:	IgG
Characteristics:	Polyclonal Antibody
Purification:	Affinity purification

Target Details

Target:	BCL2L1
Alternative Name:	BCL-x (BCL2L1 Products)
Background:	BCL2L1 is a member of the BCL-2 protein family. BCL2L1 is expressed as two distinct isoforms, Bcl-xL and Bcl-xS, and is located at the outer mitochondrial membrane. The Bcl-XL isoform is a 233 amino acid protein, acting as an apoptotic inhibitor. Bcl-XL can form heterodimers with BAX, BAK or BCL2, and the heterodimerization with BAX does not seem to be required for anti-

Target Details

apoptotic activity. The Bcl-XS isoform is a shorter variant that is 178 amino acids in length and lacks a 63 amino acid region (amino acids 126-188), acting as an apoptotic activator. This antibody can recognize Bcl-XL, Bcl-XS and Bcl-X(Beta).

Molecular Weight: Observed_MW: 26 kDa
Calculated_MW: 26 kDa

UniProt: [Q07817](#)

Pathways: [Apoptosis](#), [Negative Regulation of intrinsic apoptotic Signaling](#)

Application Details

Application Notes: WB 1:500-1:1000, IHC 1:50-1:100

Restrictions: For Research Use only

Handling

Format: Liquid

Concentration: 2 mg/mL

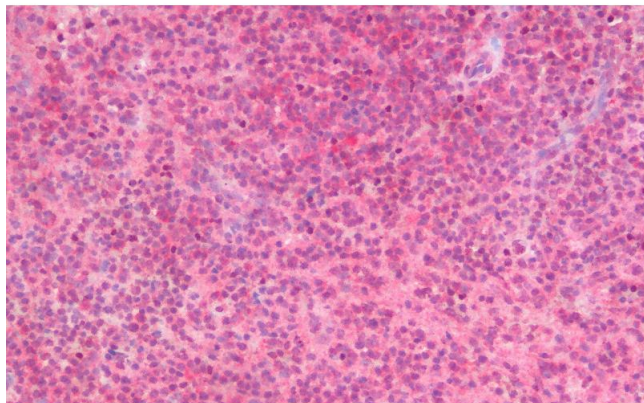
Buffer: PBS with 0.05 % Proclin300 and 50 % glycerol, pH 7.4.

Preservative: ProClin

Precaution of Use: This product contains ProClin: a POISONOUS AND HAZARDOUS SUBSTANCE which should be handled by trained staff only.

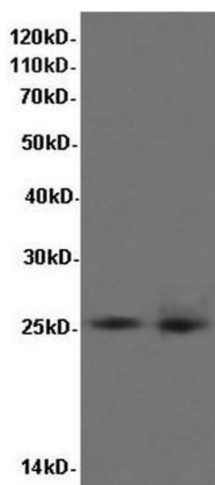
Storage: -20 °C

Storage Comment: Store at -20°C. Avoid freeze / thaw cycles.



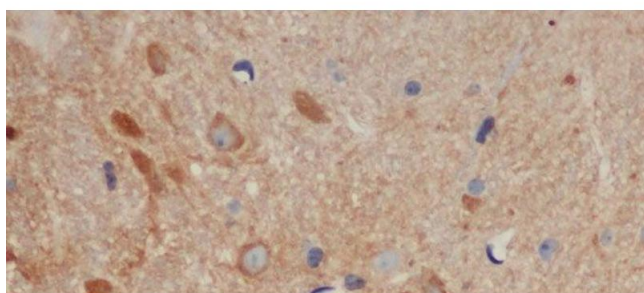
Immunohistochemistry (Paraffin-embedded Sections)

Image 1. Immunohistochemistry analysis of paraffin-embedded Human Spleen using BCL-x Polyclonal Antibody.



Western Blotting

Image 2. Western Blot analysis of K562 cells and Rat liver tissue using BCL-x Polyclonal Antibody at dilution of 1:600



Immunohistochemistry (Paraffin-embedded Sections)

Image 3. Immunohistochemistry of paraffin-embedded Mouse brain using BCL-x Polyclonal Antibody at dilution of 1:50

Please check the [product details page](#) for more images. Overall 4 images are available for ABIN6999649.