

Datasheet for ABIN6999714  
**anti-CD68 antibody**



[Go to Product page](#)

2 Images

## Overview

Quantity:	20 µL
Target:	CD68
Reactivity:	Mouse, Rat
Host:	Rabbit
Clonality:	Polyclonal
Conjugate:	This CD68 antibody is un-conjugated
Application:	Western Blotting (WB), Immunohistochemistry (IHC)

## Product Details

Immunogen:	Recombinant Human Macrosialin protein
Isotype:	IgG
Characteristics:	Polyclonal Antibody
Purification:	Affinity purification

## Target Details

Target:	CD68
Alternative Name:	CD68 ( <a href="#">CD68 Products</a> )
Background:	CD68 is a type I transmembrane glycoprotein that is highly expressed by human monocytes and tissue macrophages. It belongs to the lysosomal/endosomal-associated membrane glycoprotein (LAMP) family and primarily localizes to lysosomes and endosomes with a smaller fraction circulating to the cell surface. CD68 is also a member of the scavenger receptor family.

## Target Details

It may play a role in phagocytic activities of tissue macrophages.

Molecular Weight: Observed\_MW: 37 kDa  
Calculated\_MW: 37 kDa

UniProt: [P34810](#)

## Application Details

Application Notes: WB 1:500-1:1000, IHC 1:50-1:100

Restrictions: For Research Use only

## Handling

Format: Liquid

Concentration: 2 mg/mL

Buffer: PBS with 0.02 % sodium azide, 50 % glycerol, pH 7.3

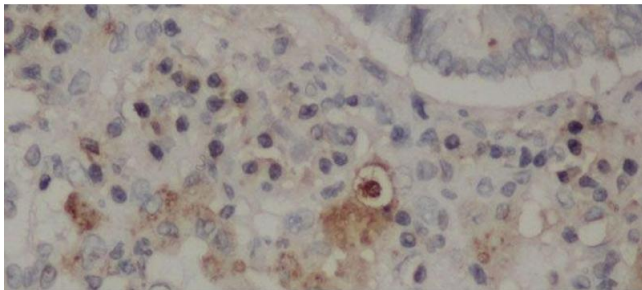
Preservative: Sodium azide

Precaution of Use: This product contains Sodium azide: a POISONOUS AND HAZARDOUS SUBSTANCE which should be handled by trained staff only.

Storage: -20 °C

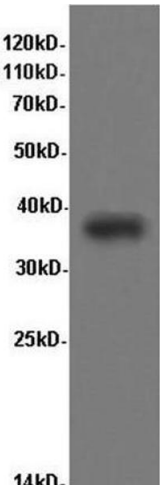
Storage Comment: Store at -20°C. Avoid freeze / thaw cycles.

## Images



### Immunohistochemistry (Paraffin-embedded Sections)

**Image 1.** Immunohistochemistry of paraffin-embedded Rat lung using CD68 Polyclonal Antibody at dilution of 1:50



**Western Blotting**

**Image 2.** Western Blot analysis of Rat kidney tissue using CD68 Polyclonal Antibody at dilution of 1:600