



Datasheet for ABIN6999859

anti-CDK4 antibody

6 Images



[Go to Product page](#)

Overview

Quantity:	20 µL
Target:	CDK4
Reactivity:	Human, Mouse, Rat
Host:	Rabbit
Clonality:	Polyclonal
Conjugate:	This CDK4 antibody is un-conjugated
Application:	Western Blotting (WB), Immunohistochemistry (IHC)

Product Details

Immunogen:	Recombinant Human Cyclin-dependent kinase 4 protein
Isotype:	IgG
Characteristics:	Polyclonal Antibody
Purification:	Antigen Affinity Purification

Target Details

Target:	CDK4
Alternative Name:	CDK4 (CDK4 Products)
Background:	The protein encoded by this gene is a member of the Ser/Thr protein kinase family. This protein is highly similar to the gene products of <i>S. cerevisiae</i> cdc28 and <i>S. pombe</i> cdc2. It is a catalytic subunit of the protein kinase complex that is important for cell cycle G1 phase progression. The activity of this kinase is restricted to the G1-S phase, which is controlled by the regulatory

Target Details

subunits D-type cyclins and CDK inhibitor p16(INK4a). This kinase was shown to be responsible for the phosphorylation of retinoblastoma gene product (Rb). Mutations in this gene as well as in its related proteins including D-type cyclins, p16(INK4a) and Rb were all found to be associated with tumorigenesis of a variety of cancers. Multiple polyadenylation sites of this gene have been reported.

Molecular Weight: Observed_MW: 21 kDa
Calculated_MW: 34,21 kDa

UniProt: [P11802](#)

Pathways: [Cell Division Cycle](#), [Mitotic G1-G1/S Phases](#), [Regulation of Cell Size](#)

Application Details

Application Notes: WB 1:1000-1:2000 IHC 1:100-1:300

Restrictions: For Research Use only

Handling

Format: Liquid

Concentration: 1 mg/mL

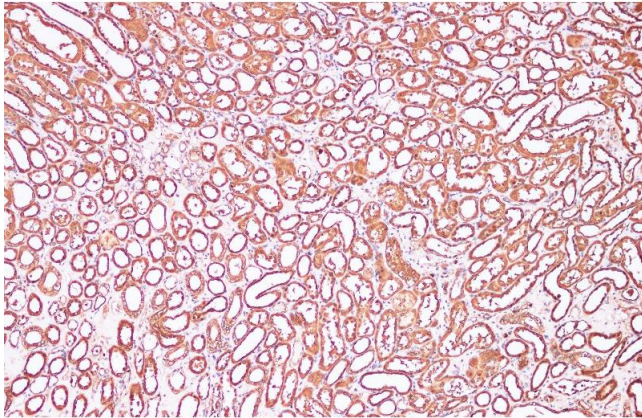
Buffer: PBS with 0.05 % Proclin300 and 50 % glycerol, pH 7.4.

Preservative: ProClin

Precaution of Use: This product contains ProClin: a POISONOUS AND HAZARDOUS SUBSTANCE which should be handled by trained staff only.

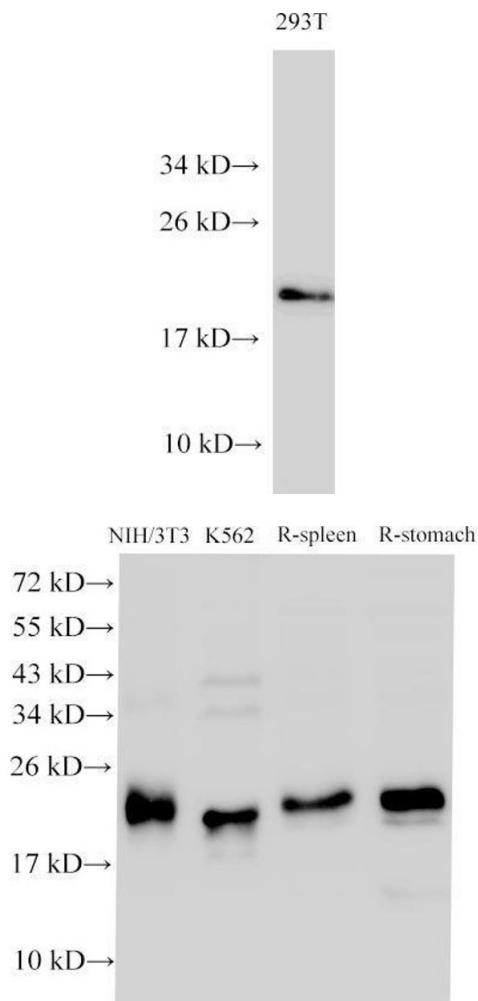
Storage: -20 °C

Storage Comment: Store at -20°C. Avoid freeze / thaw cycles.



Immunohistochemistry (Paraffin-embedded Sections)

Image 1. Immunohistochemistry of paraffin-embedded Human kidney using CDK4 Polyclonal Antibody at dilution of 1:100



Western Blotting

Image 2. Western Blot analysis of 293T cells using CDK4 Polyclonal Antibody at dilution of 1:1000

Western Blotting

Image 3. Western Blot analysis of NIH/3T3, K562 cells, Rat spleen and Rat stomach using CDK4 Polyclonal Antibody at dilution of 1:1000

Please check the [product details page](#) for more images. Overall 6 images are available for ABIN6999859.