

Datasheet for ABIN6999958

**anti-MCAM antibody****3** Images[Go to Product page](#)

## Overview

Quantity:	20 µL
Target:	MCAM
Reactivity:	Human, Mouse, Rat
Host:	Rabbit
Clonality:	Polyclonal
Conjugate:	This MCAM antibody is un-conjugated
Application:	Immunohistochemistry (IHC), Western Blotting (WB)

## Product Details

Immunogen:	Recombinant Human Cell surface glycoprotein MUC18 protein
Isotype:	IgG
Characteristics:	Polyclonal Antibody
Purification:	Antigen Affinity Purification

## Target Details

Target:	MCAM
Alternative Name:	CD146 ( <a href="#">MCAM Products</a> )
Background:	CD146,also known as melanoma cell adhesion molecule (MCAM) or MUC18,originally identified as a biomarker of melanoma progression,is a transmembrane glycoprotein belonging to the immunoglobulin (Ig) superfamily . Structurally,it consists of five Ig domains,a transmembrane domain,and a cytoplasmic region. In normal adult tissue,CD146 is primarily expressed by

## Target Details

vascular endothelium and smooth muscle. CD146 is a key cell adhesion protein in vascular endothelial cell activity and angiogenesis, and has been used as marker of circulating endothelium cells (CECs) .

Molecular Weight: Observed\_MW: 57,71 kDa  
Calculated\_MW: 57,71 kDa

Gene ID: 4162

UniProt: [P43121](#)

## Application Details

Application Notes: WB 1:500-1:1000 IHC 1:50-1:100

Restrictions: For Research Use only

## Handling

Format: Liquid

Concentration: 0.48 mg/mL

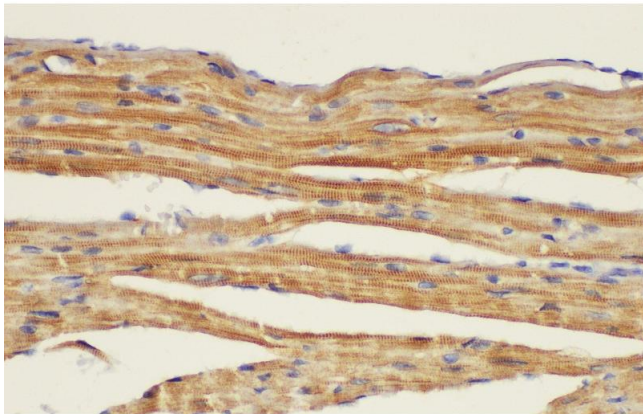
Buffer: PBS with 0.05 % Proclin300, 50 % glycerol, pH 7.3

Preservative: ProClin

Precaution of Use: This product contains ProClin: a POISONOUS AND HAZARDOUS SUBSTANCE which should be handled by trained staff only.

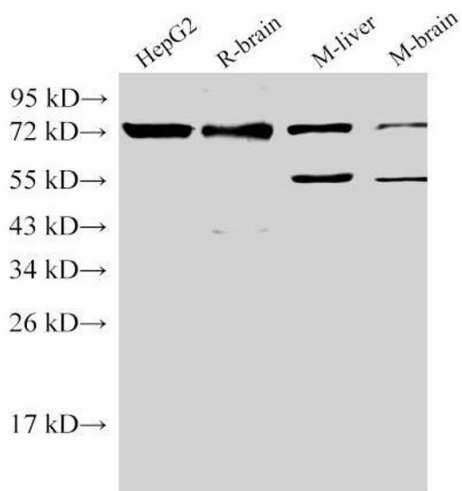
Storage: -20 °C

Storage Comment: Store at -20°C. Avoid freeze / thaw cycles.



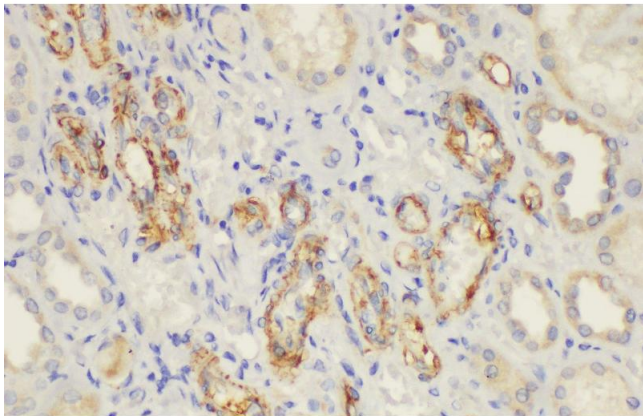
#### Immunohistochemistry (Paraffin-embedded Sections)

**Image 1.** Immunohistochemistry of paraffin-embedded Mouse heart using CD146 Ployclonal Antibody at dilution of 1:50.



#### Western Blotting

**Image 2.** Western Blot analysis of 1)HepG2, 2)Rat brain, 3)Mouse liver, 4)Mouse brain using CD146 Ployclonal Antibody at dilution of 1:500.



#### Immunohistochemistry (Paraffin-embedded Sections)

**Image 3.** Immunohistochemistry of paraffin-embedded Human kidney using CD146 Ployclonal Antibody at dilution of 1:50.