



Datasheet for ABIN7000025 anti-RBMY1A1 antibody



[Go to Product page](#)

1 Image

Overview

Quantity:	20 µL
Target:	RBMY1A1
Reactivity:	Human
Host:	Rabbit
Clonality:	Polyclonal
Conjugate:	This RBMY1A1 antibody is un-conjugated
Application:	Western Blotting (WB), ELISA

Product Details

Immunogen:	Recombinant protein of human RBMY1A1
Isotype:	IgG
Characteristics:	Polyclonal Antibody
Purification:	Affinity purification

Target Details

Target:	RBMY1A1
Alternative Name:	RBMY1A1 (RBMY1A1 Products)
Background:	This gene encodes a protein containing an RNA-binding motif in the N-terminus and four SRGY (serine, arginine, glycine, tyrosine) boxes in the C-terminus. Multiple copies of this gene are found in the AZFb azoospermia factor region of chromosome Y and the encoded protein is thought to be involved in spermatogenesis. Most copies of this locus are pseudogenes,

Target Details

although six highly similar copies have full-length ORFs and are considered functional. Four functional copies of this gene are found within inverted repeat IR2, two functional copies of this gene are found in palindrome P3, along with two copies of PTPN13-like, Y-linked.

Molecular Weight: 56 kDa

UniProt: [P0DJJ3](#)

Application Details

Application Notes: WB 1:500-1:2000

Restrictions: For Research Use only

Handling

Format: Liquid

Concentration: 0.2 mg/mL

Buffer: PBS with 0.05 % sodium azide and 50 % glycerol, PH7.4

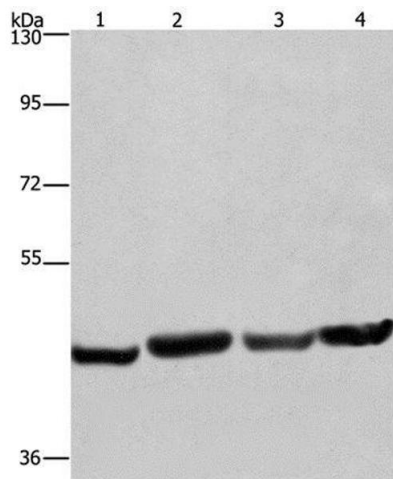
Preservative: Sodium azide

Precaution of Use: This product contains Sodium azide: a POISONOUS AND HAZARDOUS SUBSTANCE which should be handled by trained staff only.

Storage: -20 °C

Storage Comment: Store at -20°C. Avoid freeze / thaw cycles.

Images



Western Blotting

Image 1. Western Blot analysis of A549, HeLa, PC3 and HepG2 cell using RBMY1A1 Polyclonal Antibody at dilution of 1:360