

Datasheet for ABIN7000212

**anti-KLF11 antibody****1** Image[Go to Product page](#)

## Overview

Quantity:	20 µL
Target:	KLF11
Reactivity:	Human, Mouse
Host:	Rabbit
Clonality:	Polyclonal
Conjugate:	This KLF11 antibody is un-conjugated
Application:	Western Blotting (WB), ELISA

## Product Details

Immunogen:	Recombinant protein of human KLF11
Isotype:	IgG
Characteristics:	Polyclonal Antibody
Purification:	Affinity purification

## Target Details

Target:	KLF11
Alternative Name:	KLF11 ( <a href="#">KLF11 Products</a> )
Background:	The protein encoded by this gene is a zinc finger transcription factor that binds to SP1-like sequences in epsilon- and gamma-globin gene promoters. This binding inhibits cell growth and causes apoptosis. Defects in this gene are a cause of maturity-onset diabetes of the young type 7 (MODY7). Three transcript variants encoding two different isoforms have been found for this

## Target Details

	gene.
Molecular Weight:	55 kDa
UniProt:	<a href="#">O14901</a>

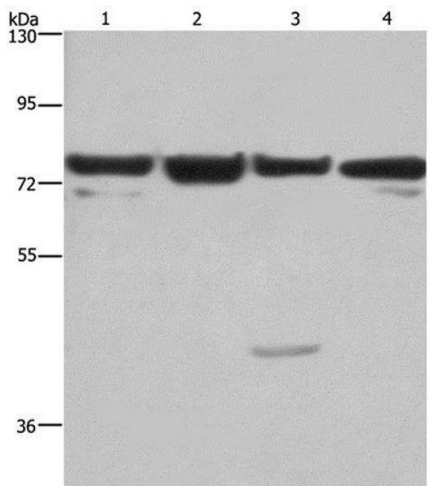
## Application Details

Application Notes:	WB 1:500-1:2000
Restrictions:	For Research Use only

## Handling

Format:	Liquid
Concentration:	0.3 mg/mL
Buffer:	PBS with 0.05 % sodium azide and 50 % glycerol, PH7.4
Preservative:	Sodium azide
Precaution of Use:	This product contains Sodium azide: a POISONOUS AND HAZARDOUS SUBSTANCE which should be handled by trained staff only.
Storage:	-20 °C
Storage Comment:	Store at -20°C. Avoid freeze / thaw cycles.

## Images



### Western Blotting

**Image 1.** Western Blot analysis of HUVEC, NIH/3T3, Hela and 293T cell using KLF11 Polyclonal Antibody at dilution of 1:350