

Datasheet for ABIN7000237

anti-MMP28 antibody[Go to Product page](#)**1** Image

Overview

Quantity:	20 µL
Target:	MMP28
Reactivity:	Human, Mouse
Host:	Rabbit
Clonality:	Polyclonal
Conjugate:	This MMP28 antibody is un-conjugated
Application:	Western Blotting (WB), ELISA

Product Details

Immunogen:	Recombinant protein of human MMP28
Isotype:	IgG
Characteristics:	Polyclonal Antibody
Purification:	Affinity purification

Target Details

Target:	MMP28
Alternative Name:	MMP28 (MMP28 Products)
Background:	<p>Proteins of the matrix metalloproteinase (MMP) family are involved in the breakdown of extracellular matrix for both normal physiological processes, such as embryonic development, reproduction and tissue remodeling, and disease processes, such as asthma and metastasis.</p> <p>This gene encodes a secreted enzyme that degrades casein. Its expression pattern suggests</p>

Target Details

that it plays a role in tissue homeostasis and in wound repair. Transcript variants encoding different isoforms have been described.

Molecular Weight:	59 kDa
UniProt:	Q9H239

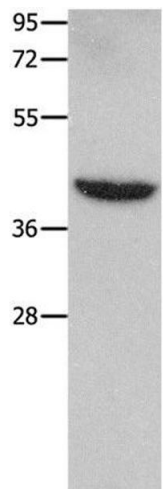
Application Details

Application Notes:	WB 1:500-1:2000
Restrictions:	For Research Use only

Handling

Format:	Liquid
Concentration:	0.2 mg/mL
Buffer:	PBS with 0.05 % sodium azide and 50 % glycerol, PH7.4
Preservative:	Sodium azide
Precaution of Use:	This product contains Sodium azide: a POISONOUS AND HAZARDOUS SUBSTANCE which should be handled by trained staff only.
Storage:	-20 °C
Storage Comment:	Store at -20°C. Avoid freeze / thaw cycles.

Images



Western Blotting

Image 1. Western Blot analysis of Mouse heart tissue using MMP28 Polyclonal Antibody at dilution of 1:350