



Datasheet for ABIN7000273 anti-Prolactin antibody



[Go to Product page](#)

1 Image

Overview

Quantity:	20 µL
Target:	Prolactin (PRL)
Reactivity:	Human
Host:	Rabbit
Clonality:	Polyclonal
Conjugate:	This Prolactin antibody is un-conjugated
Application:	ELISA, Immunohistochemistry (IHC)

Product Details

Immunogen:	Recombinant protein of human PRL
Isotype:	IgG
Characteristics:	Polyclonal Antibody
Purification:	Affinity purification

Target Details

Target:	Prolactin (PRL)
Alternative Name:	PRL (PRL Products)
Background:	This gene encodes the anterior pituitary hormone prolactin. This secreted hormone is a growth regulator for many tissues, including cells of the immune system. It may also play a role in cell survival by suppressing apoptosis, and it is essential for lactation. Alternative splicing results in multiple transcript variants that encode the same protein.

Target Details

UniProt:	P01236
Pathways:	JAK-STAT Signaling , Peptide Hormone Metabolism , Response to Growth Hormone Stimulus , Protein targeting to Nucleus

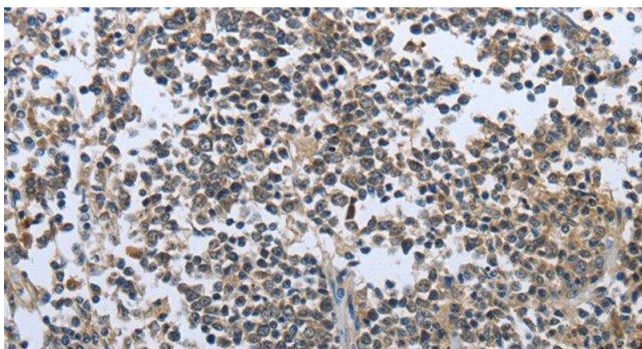
Application Details

Application Notes:	IHC 1:25-1:100
Restrictions:	For Research Use only

Handling

Format:	Liquid
Concentration:	0.3 mg/mL
Buffer:	PBS with 0.05 % sodium azide and 50 % glycerol, PH7.4
Preservative:	Sodium azide
Precaution of Use:	This product contains Sodium azide: a POISONOUS AND HAZARDOUS SUBSTANCE which should be handled by trained staff only.
Storage:	-20 °C
Storage Comment:	Store at -20°C. Avoid freeze / thaw cycles.

Images



Immunohistochemistry (Paraffin-embedded Sections)

Image 1. Immunohistochemistry of paraffin-embedded Human tonsil tissue using PRL Polyclonal Antibody at dilution 1:30