

Datasheet for ABIN7000462

anti-Caprin-1 antibody**1** Image[Go to Product page](#)

Overview

Quantity:	20 µL
Target:	Caprin-1
Reactivity:	Human, Rat, Mouse
Host:	Rabbit
Clonality:	Polyclonal
Conjugate:	This Caprin-1 antibody is un-conjugated
Application:	ELISA, Western Blotting (WB)

Product Details

Immunogen:	Recombinant protein of human CAPRIN1
Isotype:	IgG
Characteristics:	Polyclonal Antibody
Purification:	Affinity purification

Target Details

Target:	Caprin-1
Alternative Name:	CAPRIN1 (Caprin-1 Products)
Background:	Caprin-1 is a protein that in humans is encoded by the CAPRIN1 gene. May regulate the transport and translation of mRNAs of proteins involved in synaptic plasticity in neurons and cell proliferation and migration in multiple cell types. May form homomultimers. Directly interacts with G3BP1 in cytoplasmic RNA granules. Binds directly and selectively to MYC and CCND2

Target Details

RNAs. In neuronal cells, directly binds to several mRNAs associated with RNA granules, including BDNF, CAMK2A, CREB1, MAP2, NTRK2 mRNAs, as well as to GRIN1 and KPNB1 mRNAs, but not to rRNAs.

Molecular Weight: 78 kDa

UniProt: [Q14444](#)

Application Details

Application Notes: WB 1:200-1:1000

Restrictions: For Research Use only

Handling

Format: Liquid

Concentration: 0.2 mg/mL

Buffer: PBS with 0.05 % sodium azide and 50 % glycerol, PH7.4

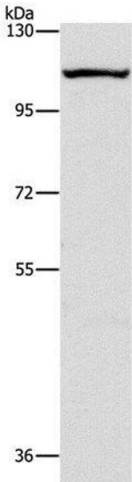
Preservative: Sodium azide

Precaution of Use: This product contains Sodium azide: a POISONOUS AND HAZARDOUS SUBSTANCE which should be handled by trained staff only.

Storage: -20 °C

Storage Comment: Store at -20°C. Avoid freeze / thaw cycles.

Images



Western Blotting

Image 1. Western Blot analysis of K562 cell using CAPRIN1 Polyclonal Antibody at dilution of 1:200