

Datasheet for ABIN7000597

**anti-CYP11A1 antibody****1** Image[Go to Product page](#)

## Overview

Quantity:	20 µL
Target:	CYP11A1
Reactivity:	Human
Host:	Rabbit
Clonality:	Polyclonal
Conjugate:	This CYP11A1 antibody is un-conjugated
Application:	Western Blotting (WB), ELISA

## Product Details

Immunogen:	Recombinant protein of human CYP11A1
Isotype:	IgG
Characteristics:	Polyclonal Antibody
Purification:	Affinity purification

## Target Details

Target:	CYP11A1
Alternative Name:	CYP11A1 ( <a href="#">CYP11A1 Products</a> )
Background:	This gene encodes a member of the cytochrome P450 superfamily of enzymes. The cytochrome P450 proteins are monooxygenases which catalyze many reactions involved in drug metabolism and synthesis of cholesterol, steroids and other lipids. This protein localizes to the mitochondrial inner membrane and catalyzes the conversion of cholesterol to

## Target Details

pregnenolone, the first and rate-limiting step in the synthesis of the steroid hormones.

Molecular Weight: 60 kDa

UniProt: [P05108](#)

Pathways: [Metabolism of Steroid Hormones and Vitamin D](#), [Steroid Hormone Biosynthesis](#), [C21-Steroid Hormone Metabolic Process](#), [Cellular Response to Molecule of Bacterial Origin](#)

## Application Details

Application Notes: WB 1:200-1:1000

Restrictions: For Research Use only

## Handling

Format: Liquid

Concentration: 0.7 mg/mL

Buffer: PBS with 0.05 % sodium azide and 50 % glycerol, PH7.4

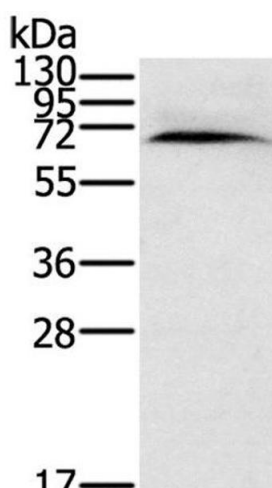
Preservative: Sodium azide

Precaution of Use: This product contains Sodium azide: a POISONOUS AND HAZARDOUS SUBSTANCE which should be handled by trained staff only.

Storage: -20 °C

Storage Comment: Store at -20°C. Avoid freeze / thaw cycles.

## Images



### Western Blotting

**Image 1.** Western Blot analysis of Human normal kidney tissue using CYP11A1 Polyclonal Antibody at dilution of 1:200