

Datasheet for ABIN7000754

**anti-LTA4H antibody**[Go to Product page](#)**1** Image

## Overview

Quantity:	20 µL
Target:	LTA4H
Reactivity:	Human, Mouse, Rat
Host:	Rabbit
Clonality:	Polyclonal
Conjugate:	This LTA4H antibody is un-conjugated
Application:	Western Blotting (WB), ELISA

## Product Details

Immunogen:	Recombinant protein of human LTA4H
Isotype:	IgG
Characteristics:	Polyclonal Antibody
Purification:	Affinity purification

## Target Details

Target:	LTA4H
Alternative Name:	LTA4H ( <a href="#">LTA4H Products</a> )
Background:	LTA4H (Leukotriene A4-hydrolase) is a Zn <sup>2+</sup> -containing enzyme with both epoxide hydrolase and aminopeptidase activity. As an epoxide hydrolase, LTA4H catalyzes the hydration of LTA4 to leukotriene B4 (LTB4, 5S,12R-dihydroxy-6,14-cis-8,10-trans-eicosatetraenoic acid), a potent lipid chemoattractant that influences inflammation, immune responses, and host defense

## Target Details

against infection. As an aminopeptidase, LTA4H catalyzes the cleavage of amides of para-nitroaniline. The human LTA4H gene encodes a 610 amino acid protein.

Molecular Weight:	69 kDa
UniProt:	<a href="#">P09960</a>

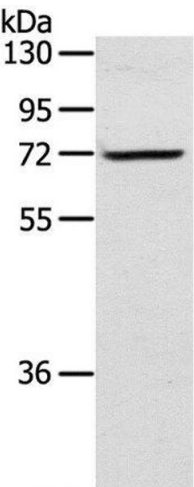
## Application Details

Application Notes:	WB 1:500-1:2000
Restrictions:	For Research Use only

## Handling

Format:	Liquid
Concentration:	0.2 mg/mL
Buffer:	PBS with 0.05 % sodium azide and 50 % glycerol, PH7.4
Preservative:	Sodium azide
Precaution of Use:	This product contains Sodium azide: a POISONOUS AND HAZARDOUS SUBSTANCE which should be handled by trained staff only.
Storage:	-20 °C
Storage Comment:	Store at -20°C. Avoid freeze / thaw cycles.

## Images



### Western Blotting

**Image 1.** Western Blot analysis of TM4 cell using LTA4H Polyclonal Antibody at dilution of 1:300