

Datasheet for ABIN7000820

**anti-SCGB2A1 antibody****3** Images[Go to Product page](#)

## Overview

Quantity:	20 µL
Target:	SCGB2A1
Reactivity:	Human
Host:	Rabbit
Clonality:	Polyclonal
Conjugate:	This SCGB2A1 antibody is un-conjugated
Application:	ELISA, Western Blotting (WB), Immunohistochemistry (IHC)

## Product Details

Immunogen:	Recombinant protein of human SCGB2A1
Isotype:	IgG
Characteristics:	Polyclonal Antibody
Purification:	Affinity purification

## Target Details

Target:	SCGB2A1
Alternative Name:	SCGB2A1 ( <a href="#">SCGB2A1 Products</a> )
Background:	Mammaglobin-Balso known as secretoglobin family 2A member 1 is a protein that in humans is encoded by the SCGB2A1 gene. SCGB2A1 expression is highly specific of mammary tissue, and has been used for identification and detection of disseminated breast cancer cells. May bind androgens and other steroids, may also bind estramustine, a chemotherapeutic agent used for

## Target Details

prostate cancer. May be under transcriptional regulation of steroid hormones.

Molecular Weight: 11 kDa

UniProt: [O75556](#)

## Application Details

Application Notes: WB 1:200-1:1000, IHC 1:100-1:300

Restrictions: For Research Use only

## Handling

Format: Liquid

Concentration: 1.2 mg/mL

Buffer: PBS with 0.05 % sodium azide and 50 % glycerol, PH7.4

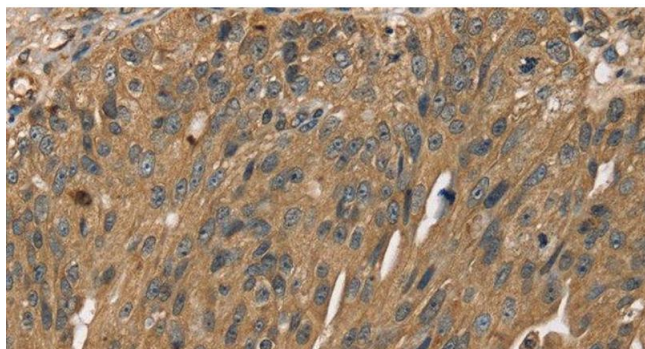
Preservative: Sodium azide

Precaution of Use: This product contains Sodium azide: a POISONOUS AND HAZARDOUS SUBSTANCE which should be handled by trained staff only.

Storage: -20 °C

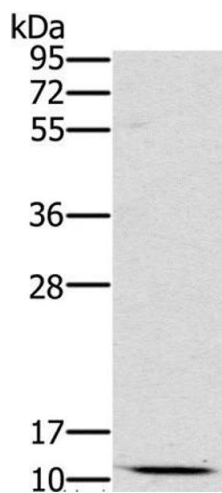
Storage Comment: Store at -20°C. Avoid freeze / thaw cycles.

## Images



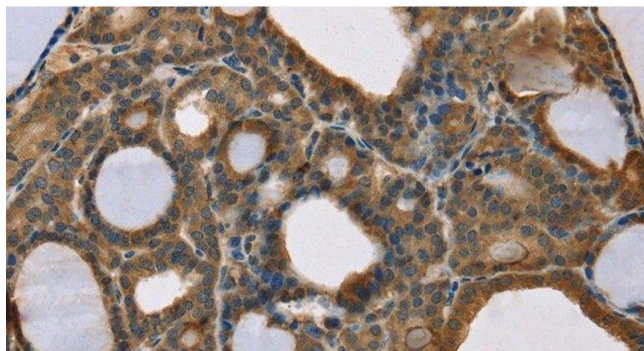
### Immunohistochemistry (Paraffin-embedded Sections)

**Image 1.** Immunohistochemistry of paraffin-embedded Human breast cancer using SCGB2A1 Polyclonal Antibody at dilution of 1:50



#### Western Blotting

**Image 2.** Western Blot analysis of Mouse kidney tissue using SCGB2A1 Polyclonal Antibody at dilution of 1:800



#### Immunohistochemistry (Paraffin-embedded Sections)

**Image 3.** Immunohistochemistry of paraffin-embedded Human thyroid cancer using SCGB2A1 Polyclonal Antibody at dilution of 1:50