



[Go to Product page](#)

Datasheet for ABIN7000837

anti-GNB2L1 antibody

1 Image

Overview

Quantity:	20 µL
Target:	GNB2L1
Reactivity:	Human, Mouse, Rat
Host:	Rabbit
Clonality:	Polyclonal
Conjugate:	This GNB2L1 antibody is un-conjugated
Application:	Western Blotting (WB), ELISA

Product Details

Immunogen:	Recombinant protein of human GNB2L1
Isotype:	IgG
Characteristics:	Polyclonal Antibody
Purification:	Affinity purification

Target Details

Target:	GNB2L1
Alternative Name:	RACK1 (GNB2L1 Products)
Background:	RACK1 (receptor for activated C kinase 1) is a 317 amino acid G protein b subunit-like protein that functions as a RACK and inhibits the activity of Src tyrosine kinases. In response to PKC activation, the intracellular localization of RACK1 and PKC bII changes, and RACK1 and PKC bII co-localize to the same sites. RACK1 is therefore thought to be a shuttling protein for PKC bII. A

Target Details

deficit in RACK1 may be associated with impaired PKC activation in the aging brain.

Molecular Weight: 35 kDa

UniProt: [P63244](#)

Pathways: [cAMP Metabolic Process, Positive Regulation of Endopeptidase Activity](#)

Application Details

Application Notes: WB 1:200-1:1000

Restrictions: For Research Use only

Handling

Format: Liquid

Concentration: 0.5 mg/mL

Buffer: PBS with 0.05 % sodium azide and 50 % glycerol, PH7.4

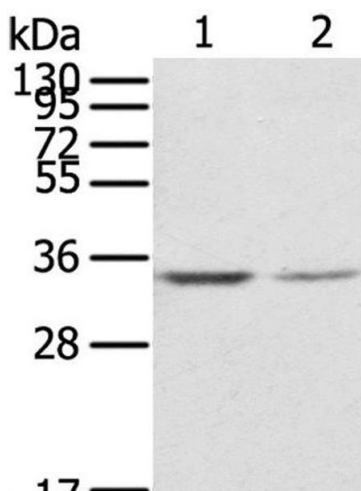
Preservative: Sodium azide

Precaution of Use: This product contains Sodium azide: a POISONOUS AND HAZARDOUS SUBSTANCE which should be handled by trained staff only.

Storage: -20 °C

Storage Comment: Store at -20°C. Avoid freeze / thaw cycles.

Images



Western Blotting

Image 1. Western Blot analysis of NIH/3T3 and Jurkat cell using RACK1 Polyclonal Antibody at dilution of 1:300