

Datasheet for ABIN7000853

anti-RRBP1 antibody[Go to Product page](#)**1** Image

Overview

Quantity:	20 µL
Target:	RRBP1
Reactivity:	Human, Mouse
Host:	Rabbit
Clonality:	Polyclonal
Conjugate:	This RRBP1 antibody is un-conjugated
Application:	Western Blotting (WB), ELISA

Product Details

Immunogen:	Recombinant protein of human RRBP1
Isotype:	IgG
Characteristics:	Polyclonal Antibody
Purification:	Affinity purification

Target Details

Target:	RRBP1
Alternative Name:	RRBP1 (RRBP1 Products)
Background:	This gene encodes a ribosome-binding protein of the endoplasmic reticulum (ER) membrane. Studies suggest that this gene plays a role in ER proliferation, secretory pathways and secretory cell differentiation, and mediation of ER-microtubule interactions. Alternative splicing has been observed and protein isoforms are characterized by regions of N-terminal decapeptide and C-

Target Details

terminal heptad repeats. Splicing of the tandem repeats results in variations in ribosome-binding affinity and secretory function.

Molecular Weight: 152 kDa

UniProt: [Q9P2E9](#)

Application Details

Application Notes: WB 1:500-1:2000

Restrictions: For Research Use only

Handling

Format: Liquid

Concentration: 0.3 mg/mL

Buffer: PBS with 0.05 % sodium azide and 50 % glycerol, PH7.4

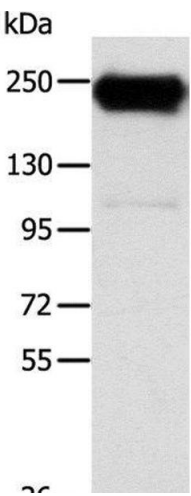
Preservative: Sodium azide

Precaution of Use: This product contains Sodium azide: a POISONOUS AND HAZARDOUS SUBSTANCE which should be handled by trained staff only.

Storage: -20 °C

Storage Comment: Store at -20°C. Avoid freeze / thaw cycles.

Images



Western Blotting

Image 1. Western Blot analysis of K562 cell using RRBP1 Polyclonal Antibody at dilution of 1:400