

Datasheet for ABIN7000860
anti-SLC25A26 antibody[Go to Product page](#)

1 Image

Overview

Quantity:	20 µL
Target:	SLC25A26
Reactivity:	Human, Mouse
Host:	Rabbit
Clonality:	Polyclonal
Conjugate:	This SLC25A26 antibody is un-conjugated
Application:	ELISA, Immunohistochemistry (IHC)

Product Details

Immunogen:	Recombinant protein of human SLC25A26
Isotype:	IgG
Characteristics:	Polyclonal Antibody
Purification:	Affinity purification

Target Details

Target:	SLC25A26
Alternative Name:	SLC25A26 (SLC25A26 Products)
Background:	Mitochondrial carriers, including SLC25A26, are a family of transport proteins found mostly in the inner membranes of mitochondria. They shuttle metabolites and cofactors through the mitochondrial membrane

Target Details

UniProt: [Q70HW3](#)

Application Details

Application Notes: IHC 1:25-1:100

Restrictions: For Research Use only

Handling

Format: Liquid

Concentration: 0.4 mg/mL

Buffer: PBS with 0.05 % sodium azide and 50 % glycerol, PH7.4

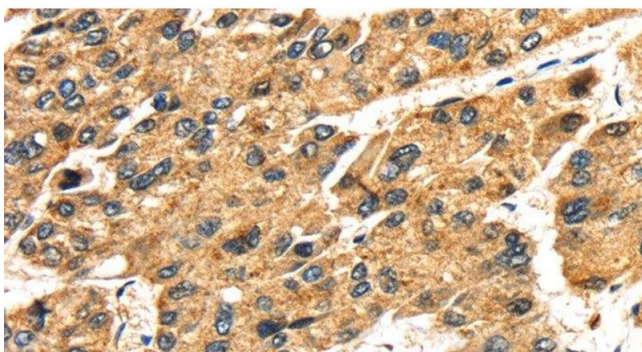
Preservative: Sodium azide

Precaution of Use: This product contains Sodium azide: a POISONOUS AND HAZARDOUS SUBSTANCE which should be handled by trained staff only.

Storage: -20 °C

Storage Comment: Store at -20°C. Avoid freeze / thaw cycles.

Images



Immunohistochemistry (Paraffin-embedded Sections)

Image 1. Immunohistochemistry of paraffin-embedded Human liver cancer tissue using SLC25A26 Polyclonal Antibody at dilution 1:30