



Datasheet for ABIN7000902

## anti-RALB antibody



[Go to Product page](#)

### 1 Image

#### Overview

Quantity:	20 µL
Target:	RALB (Ralb)
Reactivity:	Human, Mouse, Rat
Host:	Rabbit
Clonality:	Polyclonal
Conjugate:	This RALB antibody is un-conjugated
Application:	Western Blotting (WB), ELISA

#### Product Details

Immunogen:	Synthetic peptide of human RALB
Isotype:	IgG
Characteristics:	Polyclonal Antibody
Purification:	Affinity purification

#### Target Details

Target:	RALB (Ralb)
Alternative Name:	RALB ( <a href="#">Ralb Products</a> )
Background:	This gene encodes a GTP-binding protein that belongs to the small GTPase superfamily and Ras family of proteins. GTP-binding proteins mediate the transmembrane signaling initiated by the occupancy of certain cell surface receptors.

## Target Details

Molecular Weight:	24 kDa
NCBI Accession:	<a href="#">NP_002872</a>
UniProt:	<a href="#">P11234</a>
Pathways:	<a href="#">Neurotrophin Signaling Pathway</a> , <a href="#">CXCR4-mediated Signaling Events</a>

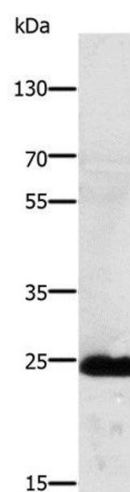
## Application Details

Application Notes:	WB 1:500-1:2000
Restrictions:	For Research Use only

## Handling

Format:	Liquid
Concentration:	0.4 mg/mL
Buffer:	PBS with 0.05 % sodium azide and 50 % glycerol, PH7.4
Preservative:	Sodium azide
Precaution of Use:	This product contains Sodium azide: a POISONOUS AND HAZARDOUS SUBSTANCE which should be handled by trained staff only.
Storage:	-20 °C
Storage Comment:	Store at -20°C. Avoid freeze / thaw cycles.

## Images



### Western Blotting

**Image 1.** Western Blot analysis of Mouse lung tissue using RALB Polyclonal Antibody at dilution of 1:250