



Datasheet for ABIN7000935 anti-CX3CL1 antibody



[Go to Product page](#)

1 Image

Overview

Quantity:	20 µL
Target:	CX3CL1
Reactivity:	Human, Rat, Mouse
Host:	Rabbit
Clonality:	Polyclonal
Conjugate:	This CX3CL1 antibody is un-conjugated
Application:	ELISA, Immunohistochemistry (IHC)

Product Details

Immunogen:	Synthetic peptide of human CX3CL1
Isotype:	IgG
Characteristics:	Polyclonal Antibody
Purification:	Affinity purification

Target Details

Target:	CX3CL1
Alternative Name:	CX3CL1 (CX3CL1 Products)
Background:	This gene encodes a large cytokine protein of 373 amino acids, it contains multiple domains and is the only known member of the CX3C chemokine family. It is also commonly known under the names fractalkine (in humans) and neurotactin (in mice). The polypeptide structure of CX3CL1 differs from the typical structure of other chemokines. CX3CL1 is produced as a long

Target Details

protein (with 373-amino acid in humans) with an extended mucin-like stalk and a chemokine domain on top. The mucin-like stalk permits it to bind to the surface of certain cells. However a soluble (90 kD) version of this chemokine has also been observed. Soluble CX3CL1 potently chemoattracts T cells and monocytes, while the cell-bound chemokine promotes strong adhesion of leukocytes to activated endothelial cells, where it is primarily expressed. CX3CL1 elicits its adhesive and migratory functions by interacting with the chemokine receptor CX3CR1. Its gene is located on human chromosome 16 along with some CC chemokines known as CCL17 and CCL22.

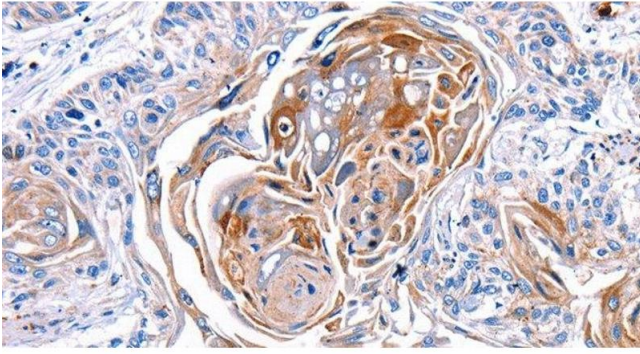
NCBI Accession:	NP_002987
UniProt:	P78423
Pathways:	Synaptic Membrane

Application Details

Application Notes:	IHC 1:25-1:100
Restrictions:	For Research Use only

Handling

Format:	Liquid
Concentration:	0.3 mg/mL
Buffer:	PBS with 0.05 % sodium azide and 50 % glycerol, PH7.4
Preservative:	Sodium azide
Precaution of Use:	This product contains Sodium azide: a POISONOUS AND HAZARDOUS SUBSTANCE which should be handled by trained staff only.
Storage:	-20 °C
Storage Comment:	Store at -20°C. Avoid freeze / thaw cycles.



Immunohistochemistry (Paraffin-embedded Sections)

Image 1. Immunohistochemistry of paraffin-embedded Human esophagus cancer tissue using CX3CL1 Polyclonal Antibody at dilution 1:30