

Datasheet for ABIN7000956

**anti-ENPP7 antibody****2** Images[Go to Product page](#)

## Overview

Quantity:	20 µL
Target:	ENPP7
Reactivity:	Human, Rat
Host:	Rabbit
Clonality:	Polyclonal
Conjugate:	This ENPP7 antibody is un-conjugated
Application:	Western Blotting (WB), ELISA, Immunohistochemistry (IHC)

## Product Details

Immunogen:	Synthetic peptide of human ENPP7
Isotype:	IgG
Characteristics:	Polyclonal Antibody
Purification:	Affinity purification

## Target Details

Target:	ENPP7
Alternative Name:	ENPP7 ( <a href="#">ENPP7 Products</a> )
Background:	Ectonucleotide pyrophosphatase/phosphodiesterase family member 7(E-NPP 7) also known as alkaline sphingomyelin phosphodiesterase (Alk-SMase) or intestinal alkaline sphingomyelinase is an enzyme that in humans is encoded by the ENPP7 gene. Converts sphingomyelin to ceramide. Also has phospholipase C activity toward palmitoyl lyso-

## Target Details

phosphocholine. Does not appear to have nucleotide pyrophosphatase activity. Inhibited in a dose dependent manner by ATP, imidazole, orthovanadate and zinc ion. Not inhibited by ADP, AMP and EDTA. Detected in the colon (at protein level). Expressed in the duodenum, jejunum and liver and at low levels in the ileum. Expression was very low in the esophagus, stomach and colon.

Molecular Weight: 52 kDa

NCBI Accession: [NP\\_848638](#)

UniProt: [Q6UWV6](#)

## Application Details

Application Notes: WB 1:500-1:2000, IHC 1:50-1:200

Restrictions: For Research Use only

## Handling

Format: Liquid

Concentration: 0.4 mg/mL

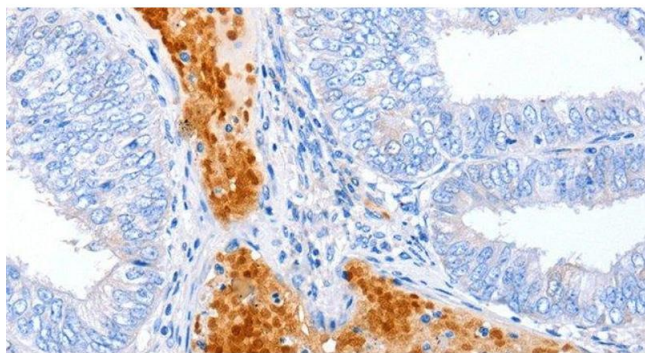
Buffer: PBS with 0.05 % sodium azide and 50 % glycerol, PH7.4

Preservative: Sodium azide

Precaution of Use: This product contains Sodium azide: a POISONOUS AND HAZARDOUS SUBSTANCE which should be handled by trained staff only.

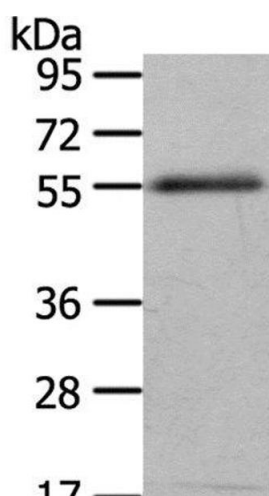
Storage: -20 °C

Storage Comment: Store at -20°C. Avoid freeze / thaw cycles.



#### Immunohistochemistry (Paraffin-embedded Sections)

**Image 1.** Immunohistochemistry of paraffin-embedded Human cervical cancer using ENPP7 Polyclonal Antibody at dilution of 1:50



#### Western Blotting

**Image 2.** Western Blot analysis of 293T cell using ENPP7 Polyclonal Antibody at dilution of 1:700