

Datasheet for ABIN7001314

**anti-GPR39 antibody**[Go to Product page](#)**1** Image

## Overview

Quantity:	20 µL
Target:	GPR39
Reactivity:	Human
Host:	Rabbit
Clonality:	Polyclonal
Conjugate:	This GPR39 antibody is un-conjugated
Application:	ELISA, Western Blotting (WB)

## Product Details

Immunogen:	Synthetic peptide of human GPR39
Isotype:	IgG
Characteristics:	Polyclonal Antibody
Purification:	Affinity purification

## Target Details

Target:	GPR39
Alternative Name:	GPR39 ( <a href="#">GPR39 Products</a> )
Background:	G-protein coupled receptor 39 is a protein that in humans is encoded by the GPR39 gene. The predicted 453-amino acid GPR39 protein contains the 7 transmembrane domains characteristic of GPCRs. By sequence comparison with other GPCRs, the protein sequence of GPR39 is 27 % and 32 % identical to that of GSHR and neurotensin receptor-1, respectively.

## Target Details

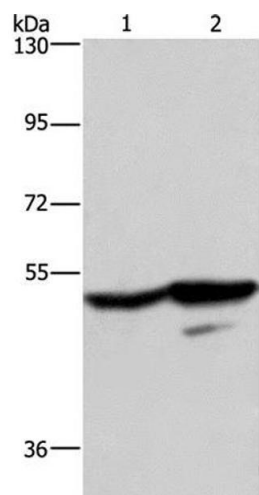
	Northern blot analysis revealed that GPR39 is expressed widely as a 1.8- to 2-kb mRNA. A 3-kb transcript is present on Northern blots of some tissues, either in addition to the smaller mRNA or as the only hybridizing band.
Molecular Weight:	51 kDa
NCBI Accession:	<a href="#">NP_001499</a>
UniProt:	<a href="#">O43194</a>
Pathways:	<a href="#">Positive Regulation of Peptide Hormone Secretion</a> , <a href="#">Carbohydrate Homeostasis</a> , <a href="#">Feeding Behaviour</a>

## Application Details

Application Notes:	WB 1:200-1:1000
Restrictions:	For Research Use only

## Handling

Format:	Liquid
Concentration:	0.7 mg/mL
Buffer:	PBS with 0.05 % sodium azide and 50 % glycerol, PH7.4
Preservative:	Sodium azide
Precaution of Use:	This product contains Sodium azide: a POISONOUS AND HAZARDOUS SUBSTANCE which should be handled by trained staff only.
Storage:	-20 °C
Storage Comment:	Store at -20°C. Avoid freeze / thaw cycles.



Western Blotting

**Image 1.** Western Blot analysis of A431 and K562 cell using GPR39 Polyclonal Antibody at dilution of 1:200