



Datasheet for ABIN7001372

anti-LASS3 antibody



[Go to Product page](#)

1 Image

Overview

Quantity:	20 µL
Target:	LASS3 (CERS3)
Reactivity:	Human
Host:	Rabbit
Clonality:	Polyclonal
Conjugate:	This LASS3 antibody is un-conjugated
Application:	ELISA, Western Blotting (WB)

Product Details

Immunogen:	Synthetic peptide of human CERS3
Isotype:	IgG
Characteristics:	Polyclonal Antibody
Purification:	Affinity purification

Target Details

Target:	LASS3 (CERS3)
Alternative Name:	CERS3 (CERS3 Products)
Background:	LASS3 is a 383 amino acid membrane protein almost exclusively expressed in testis, suggesting that LASS3 plays an important role in proper testis function. It is also weakly expressed in skin. A transcriptional variant of LASS3 cDNA exists and can result in the production of a 419 amino acid protein (LASS3-long). LASS3 overproduction raises the level of

Target Details

several ceramide species, including C18:0- and C24:0-ceramides.

Molecular Weight: 46 kDa

NCBI Accession: [NP_849164](#)

UniProt: [Q8IU89](#)

Application Details

Application Notes: WB 1:200-1:1000

Restrictions: For Research Use only

Handling

Format: Liquid

Concentration: 0.4 mg/mL

Buffer: PBS with 0.05 % sodium azide and 50 % glycerol, PH7.4

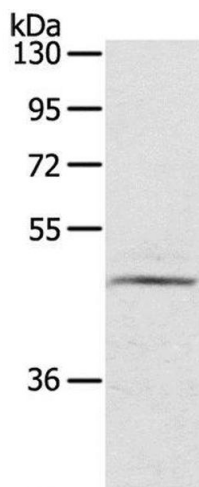
Preservative: Sodium azide

Precaution of Use: This product contains Sodium azide: a POISONOUS AND HAZARDOUS SUBSTANCE which should be handled by trained staff only.

Storage: -20 °C

Storage Comment: Store at -20°C. Avoid freeze / thaw cycles.

Images



Western Blotting

Image 1. Western Blot analysis of TM4 cell using CERS3 Polyclonal Antibody at dilution of 1:200