

Datasheet for ABIN7001420

anti-OMG antibody[Go to Product page](#)**1** Image

Overview

Quantity:	20 µL
Target:	OMG
Reactivity:	Human, Mouse
Host:	Rabbit
Clonality:	Polyclonal
Conjugate:	This OMG antibody is un-conjugated
Application:	ELISA, Immunohistochemistry (IHC)

Product Details

Immunogen:	Synthetic peptide of human OMG
Isotype:	IgG
Characteristics:	Polyclonal Antibody
Purification:	Affinity purification

Target Details

Target:	OMG
Alternative Name:	OMG (OMG Products)
Background:	Oligodendrocyte myelin glycoprotein (OMG, OMgp) is a glycosylphosphatidylinositol-anchored protein expressed by neurons and oligodendrocytes that influences the development of the adult central nervous system (CNS). OMG inhibits neurite outgrowth through its interaction with the Nogo receptor. This function requires its leucine-rich repeat domain, a highly-conserved

Target Details

region in OMG that influences cell proliferation, formation and maintenance of myelin sheaths. OMG inhibits neurite outgrowth from rat cerebellar granule and hippocampal cells, from dorsal root ganglion explants in which growth cone collapse was observed, from rat retinal ganglion neurons, and from NG108 and PC-12 cells.

NCBI Accession: [NP_002535](#)

UniProt: [P23515](#)

Pathways: [Neurotrophin Signaling Pathway](#), [Regulation of Cell Size](#)

Application Details

Application Notes: IHC 1:50-1:200

Restrictions: For Research Use only

Handling

Format: Liquid

Concentration: 0.5 mg/mL

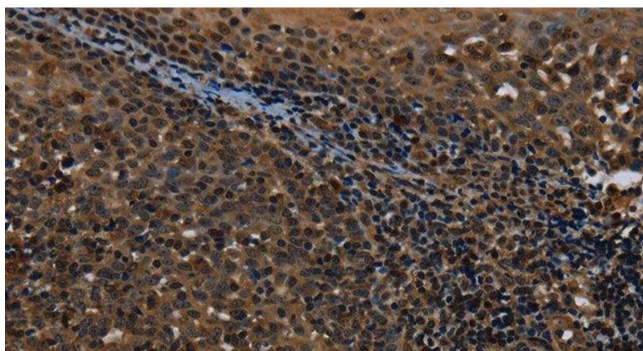
Buffer: PBS with 0.05 % sodium azide and 50 % glycerol, PH7.4

Preservative: Sodium azide

Precaution of Use: This product contains Sodium azide: a POISONOUS AND HAZARDOUS SUBSTANCE which should be handled by trained staff only.

Storage: -20 °C

Storage Comment: Store at -20°C. Avoid freeze / thaw cycles.



Immunohistochemistry (Paraffin-embedded Sections)

Image 1. Immunohistochemistry of paraffin-embedded Human tonsil tissue using OMG Polyclonal Antibody at dilution 1:30