



Datasheet for ABIN7001468

anti-CIZ1 antibody



[Go to Product page](#)

1 Image

Overview

Quantity:	20 µL
Target:	CIZ1
Reactivity:	Human
Host:	Rabbit
Clonality:	Polyclonal
Conjugate:	This CIZ1 antibody is un-conjugated
Application:	Western Blotting (WB), ELISA

Product Details

Immunogen:	Synthetic peptide of human CIZ1
Isotype:	IgG
Characteristics:	Polyclonal Antibody
Purification:	Affinity purification

Target Details

Target:	CIZ1
Alternative Name:	CIZ1 (CIZ1 Products)
Background:	The protein encoded by this gene is a zinc finger DNA binding protein that interacts with CIP1, part of a complex with cyclin E. The encoded protein may regulate the cellular localization of CIP1. Several transcript variants encoding different isoforms have been found for this gene.

Target Details

Molecular Weight:	100 kDa
NCBI Accession:	NP_001124487
UniProt:	Q9ULV3
Pathways:	Maintenance of Protein Location

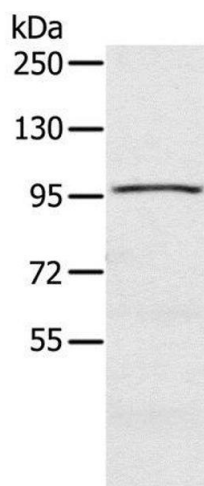
Application Details

Application Notes:	WB 1:200-1:1000
Restrictions:	For Research Use only

Handling

Format:	Liquid
Concentration:	0.6 mg/mL
Buffer:	PBS with 0.05 % sodium azide and 50 % glycerol, PH7.4
Preservative:	Sodium azide
Precaution of Use:	This product contains Sodium azide: a POISONOUS AND HAZARDOUS SUBSTANCE which should be handled by trained staff only.
Storage:	-20 °C
Storage Comment:	Store at -20°C. Avoid freeze / thaw cycles.

Images



Western Blotting

Image 1. Western Blot analysis of A549 cell using ClZ1 Polyclonal Antibody at dilution of 1:200