



Datasheet for ABIN7001474 anti-RELB antibody



[Go to Product page](#)

1 Image

Overview

Quantity:	20 µL
Target:	RELB
Reactivity:	Human, Mouse
Host:	Rabbit
Clonality:	Polyclonal
Conjugate:	This RELB antibody is un-conjugated
Application:	Western Blotting (WB), ELISA

Product Details

Immunogen:	Synthetic peptide of human RELB
Isotype:	IgG
Characteristics:	Polyclonal Antibody
Purification:	Affinity purification

Target Details

Target:	RELB
Alternative Name:	RELB (RELB Products)
Background:	Transcription factor RelB is a protein that in humans is encoded by the RELB gene. NF-kappa-B is a pleiotropic transcription factor which is present in almost all cell types and is involved in many biological processes such as inflammation, immunity, differentiation, cell growth, tumorigenesis and apoptosis. NF-kappa-B is a homo- or heterodimeric complex formed by the

Target Details

Rel-like domain-containing proteins RELA/p65, RELB, NFKB1/p105, NFKB1/p50, REL and NFKB2/p52.

Molecular Weight: 62 kDa

NCBI Accession: [NP_006500](#)

UniProt: [Q01201](#)

Pathways: [NF-kappaB Signaling](#), [RTK Signaling](#)

Application Details

Application Notes: WB 1:200-1:1000

Restrictions: For Research Use only

Handling

Format: Liquid

Concentration: 0.3 mg/mL

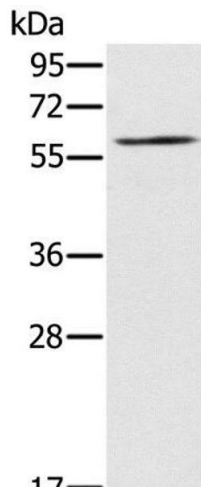
Buffer: PBS with 0.05 % sodium azide and 50 % glycerol, PH7.4

Preservative: Sodium azide

Precaution of Use: This product contains Sodium azide: a POISONOUS AND HAZARDOUS SUBSTANCE which should be handled by trained staff only.

Storage: -20 °C

Storage Comment: Store at -20°C. Avoid freeze / thaw cycles.



Western Blotting

Image 1. Western Blot analysis of NIH/3T3 cell using RELB Polyclonal Antibody at dilution of 1:200