

Datasheet for ABIN7001475

**anti-RNLS antibody****1** Image[Go to Product page](#)

## Overview

Quantity:	20 µL
Target:	RNLS
Reactivity:	Human, Mouse, Rat
Host:	Rabbit
Clonality:	Polyclonal
Conjugate:	This RNLS antibody is un-conjugated
Application:	Western Blotting (WB), ELISA

## Product Details

Immunogen:	Synthetic peptide of human RNLS
Isotype:	IgG
Characteristics:	Polyclonal Antibody
Purification:	Affinity purification

## Target Details

Target:	RNLS
Alternative Name:	RNLS ( <a href="#">RNLS Products</a> )
Background:	Renalase is a flavin adenine dinucleotide-dependent amine oxidase that is secreted into the blood from the kidney. Catalyzes the oxidation of the less abundant alpha-NAD(P)H isoform to form beta-NAD(P) <sup>+</sup> . The enzyme hormone is secreted by the kidney, and circulates in blood and modulates cardiac function and systemic blood pressure. Lowers blood pressure in vivo by

## Target Details

decreasing cardiac contractility and heart rate and preventing a compensatory increase in peripheral vascular tone, suggesting a causal link to the increased plasma catecholamine and heightened cardiovascular risk.

Molecular Weight: 38 kDa

NCBI Accession: [NP\\_001026879](#)

UniProt: [Q5VYX0](#)

## Application Details

Application Notes: WB 1:500-1:2000

Restrictions: For Research Use only

## Handling

Format: Liquid

Concentration: 0.5 mg/mL

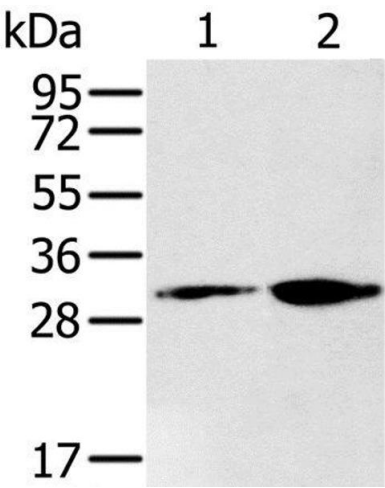
Buffer: PBS with 0.05 % sodium azide and 50 % glycerol, PH7.4

Preservative: Sodium azide

Precaution of Use: This product contains Sodium azide: a POISONOUS AND HAZARDOUS SUBSTANCE which should be handled by trained staff only.

Storage: -20 °C

Storage Comment: Store at -20°C. Avoid freeze / thaw cycles.



Western Blotting

**Image 1.** Western Blot analysis of 293T and K562 cell using RNLS Polyclonal Antibody at dilution of 1:200