

Datasheet for ABIN7001498

**anti-SLC13A3 antibody**[Go to Product page](#)**1** Image

## Overview

Quantity:	20 µL
Target:	SLC13A3
Reactivity:	Human
Host:	Rabbit
Clonality:	Polyclonal
Conjugate:	This SLC13A3 antibody is un-conjugated
Application:	Western Blotting (WB), ELISA

## Product Details

Immunogen:	Synthetic peptide of human SLC13A3
Isotype:	IgG
Characteristics:	Polyclonal Antibody
Purification:	Affinity purification

## Target Details

Target:	SLC13A3
Alternative Name:	SLC13A3 ( <a href="#">SLC13A3 Products</a> )
Background:	Mammalian sodium-dicarboxylate cotransporters transport succinate and other Krebs cycle intermediates. They fall into 2 categories based on their substrate affinity: low affinity and high affinity. Both the low- and high-affinity transporters play an important role in the handling of citrate by the kidneys. The protein encoded by this gene represents the high-affinity form.

## Target Details

Alternatively spliced transcript variants encoding different isoforms have been found for this gene, although the full-length nature of some of them have not been characterized yet.

Molecular Weight: 67 kDa

NCBI Accession: [NP\\_073740](#)

UniProt: [Q8WWT9](#)

Pathways: [Dicarboxylic Acid Transport](#)

## Application Details

Application Notes: WB 1:500-1:2000

Restrictions: For Research Use only

## Handling

Format: Liquid

Concentration: 0.4 mg/mL

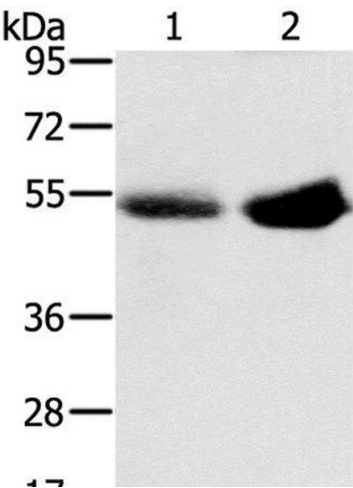
Buffer: PBS with 0.05 % sodium azide and 50 % glycerol, PH7.4

Preservative: Sodium azide

Precaution of Use: This product contains Sodium azide: a POISONOUS AND HAZARDOUS SUBSTANCE which should be handled by trained staff only.

Storage: -20 °C

Storage Comment: Store at -20°C. Avoid freeze / thaw cycles.



**Western Blotting**

**Image 1.** Western Blot analysis of Human placenta and plasma tissue using SLC13A3 Polyclonal Antibody at dilution of 1:200