

Datasheet for ABIN7001501

anti-SMC2 antibody[Go to Product page](#)**1** Image

Overview

Quantity:	20 µL
Target:	SMC2
Reactivity:	Human
Host:	Rabbit
Clonality:	Polyclonal
Conjugate:	This SMC2 antibody is un-conjugated
Application:	Western Blotting (WB), ELISA

Product Details

Immunogen:	Synthetic peptide of human SMC2
Isotype:	IgG
Characteristics:	Polyclonal Antibody
Purification:	Affinity purification

Target Details

Target:	SMC2
Alternative Name:	SMC2 (SMC2 Products)
Background:	Members of the structural maintenance of chromosomes, or SMC, family (e.g., SMC1A, MIM 300040) are critical for mitotic chromosome condensation in frogs and for DNA repair in mammals.

Target Details

Molecular Weight:	136 kDa
NCBI Accession:	NP_006435
UniProt:	O95347

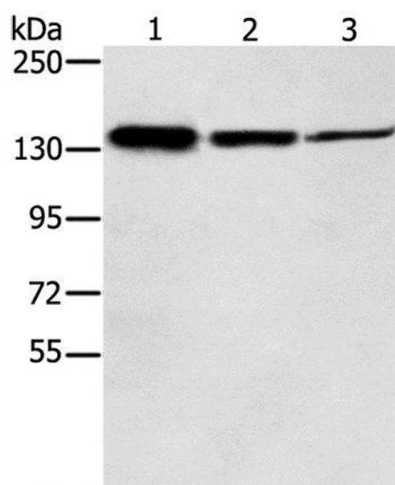
Application Details

Application Notes:	WB 1:500-1:2000
Restrictions:	For Research Use only

Handling

Format:	Liquid
Concentration:	0.5 mg/mL
Buffer:	PBS with 0.05 % sodium azide and 50 % glycerol, PH7.4
Preservative:	Sodium azide
Precaution of Use:	This product contains Sodium azide: a POISONOUS AND HAZARDOUS SUBSTANCE which should be handled by trained staff only.
Storage:	-20 °C
Storage Comment:	Store at -20°C. Avoid freeze / thaw cycles.

Images



Western Blotting

Image 1. Western Blot analysis of Jurkat, A172 and A549 cell using SMC2 Polyclonal Antibody at dilution of 1:300