

Datasheet for ABIN7001502

anti-SMN1 antibody**1** Image[Go to Product page](#)

Overview

| | |
|--------------|-------------------------------------|
| Quantity: | 20 µL |
| Target: | SMN1 |
| Reactivity: | Human |
| Host: | Rabbit |
| Clonality: | Polyclonal |
| Conjugate: | This SMN1 antibody is un-conjugated |
| Application: | Western Blotting (WB), ELISA |

Product Details

| | |
|------------------|---------------------------------|
| Immunogen: | Synthetic peptide of human SMN1 |
| Isotype: | IgG |
| Characteristics: | Polyclonal Antibody |
| Purification: | Affinity purification |

Target Details

| | |
|-------------------|---|
| Target: | SMN1 |
| Alternative Name: | SMN1 (SMN1 Products) |
| Background: | This gene is part of a 500 kb inverted duplication on chromosome 5q13. This duplicated region contains at least four genes and repetitive elements which make it prone to rearrangements and deletions. The repetitiveness and complexity of the sequence have also caused difficulty in determining the organization of this genomic region. The telomeric and centromeric copies of |

Target Details

this gene are nearly identical and encode the same protein.

Molecular Weight: 32 kDa

NCBI Accession: [NP_000335](#)

UniProt: [Q16637](#)

Pathways: [Ribonucleoprotein Complex Subunit Organization](#)

Application Details

Application Notes: WB 1:500-1:2000

Restrictions: For Research Use only

Handling

Format: Liquid

Concentration: 0.3 mg/mL

Buffer: PBS with 0.05 % sodium azide and 50 % glycerol, PH7.4

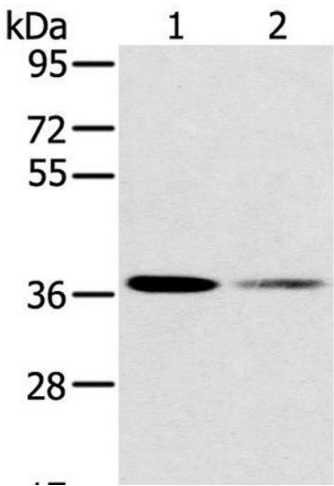
Preservative: Sodium azide

Precaution of Use: This product contains Sodium azide: a POISONOUS AND HAZARDOUS SUBSTANCE which should be handled by trained staff only.

Storage: -20 °C

Storage Comment: Store at -20°C. Avoid freeze / thaw cycles.

Images



Western Blotting

Image 1. Western Blot analysis of 293T and Raji cell using SMN1 Polyclonal Antibody at dilution of 1:200