

Datasheet for ABIN7001527

anti-TPD52 antibody[Go to Product page](#)**1** Image

Overview

| | |
|--------------|------------------------------|
| Quantity: | 20 µL |
| Target: | TPD52 |
| Reactivity: | Human |
| Host: | Rabbit |
| Clonality: | Polyclonal |
| Application: | Western Blotting (WB), ELISA |

Product Details

| | |
|------------------|----------------------------------|
| Immunogen: | Synthetic peptide of human TPD52 |
| Isotype: | IgG |
| Characteristics: | Polyclonal Antibody |
| Purification: | Affinity purification |

Target Details

| | |
|-------------------|--|
| Target: | TPD52 |
| Alternative Name: | TPD52 (TPD52 Products) |
| Background: | The tumor protein D52 (TPD52) family consists of three members, TPD52, TPD52L1 (D53), and TPD52L2 (D54). These small coiled-coil motif bearing proteins interact in hetero- and homomeric fashion. The TPD52 gene maps to chromosome 8q21, and due to amplification, shows frequent overexpression in prostate and breast carcinomas. TPD52 bound to annexin VI in a Ca(2+)-dependent manner, suggesting that these molecules may act in concert to regulate |

Target Details

| | |
|-------------------|--------------------------------------|
| | secretory processes in plasma cells. |
| Molecular Weight: | 24 kDa |
| NCBI Accession: | NP_005070 |
| UniProt: | P55327 |

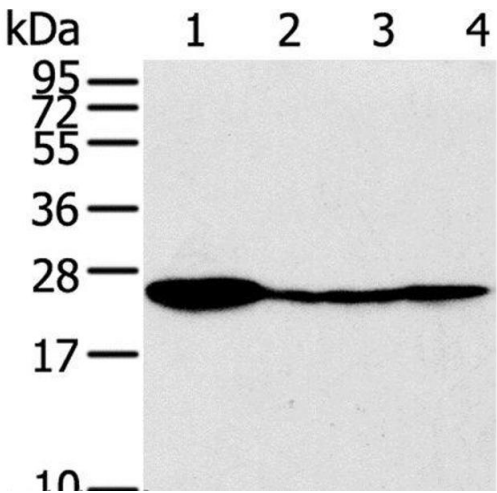
Application Details

| | |
|--------------------|-----------------------|
| Application Notes: | WB 1:500-1:2000 |
| Restrictions: | For Research Use only |

Handling

| | |
|--------------------|--|
| Format: | Liquid |
| Concentration: | 0.8 mg/mL |
| Buffer: | PBS with 0.05 % sodium azide and 50 % glycerol, PH7.4 |
| Preservative: | Sodium azide |
| Precaution of Use: | This product contains Sodium azide: a POISONOUS AND HAZARDOUS SUBSTANCE which should be handled by trained staff only. |
| Storage: | -20 °C |
| Storage Comment: | Store at -20°C. Avoid freeze / thaw cycles. |

Images



Western Blotting

Image 1. Western Blot analysis of Raji, 231, 293T and A549 cell using TPD52 Polyclonal Antibody at dilution of 1:320