

Datasheet for ABIN7001528

anti-TPD52L1 antibody**1** Image[Go to Product page](#)

Overview

Quantity:	20 µL
Target:	TPD52L1
Reactivity:	Human
Host:	Rabbit
Clonality:	Polyclonal
Conjugate:	This TPD52L1 antibody is un-conjugated
Application:	Western Blotting (WB), ELISA

Product Details

Immunogen:	Synthetic peptide of human TPD52L1
Isotype:	IgG
Characteristics:	Polyclonal Antibody
Purification:	Affinity purification

Target Details

Target:	TPD52L1
Alternative Name:	TPD52L1 (TPD52L1 Products)
Background:	This gene encodes a member of the tumor protein D52 (TPD52) family. The encoded protein contains a coiled-coil domain and may form homo- or hetero-dimer with TPD52 family members. The protein is reported to be involved in cell proliferation and calcium signaling. It also interacts with the mitogen-activated protein kinase kinase kinase 5 (MAP3K5/ASK1) and

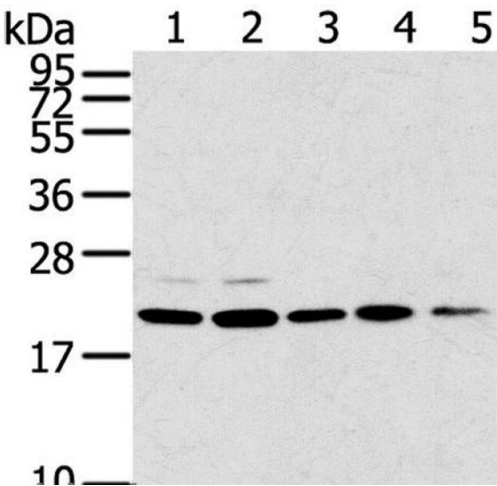
Target Details

	positively regulates MAP3K5-induced apoptosis.
Molecular Weight:	22 kDa
NCBI Accession:	NP_003278
UniProt:	Q16890
Pathways:	Positive Regulation of Endopeptidase Activity

Application Details

Application Notes:	WB 1:500-1:2000
Restrictions:	For Research Use only
Handling	
Format:	Liquid
Concentration:	0.9 mg/mL
Buffer:	PBS with 0.05 % sodium azide and 50 % glycerol, PH7.4
Preservative:	Sodium azide
Precaution of Use:	This product contains Sodium azide: a POISONOUS AND HAZARDOUS SUBSTANCE which should be handled by trained staff only.
Storage:	-20 °C
Storage Comment:	Store at -20°C. Avoid freeze / thaw cycles.

Images



Western Blotting

Image 1. Western Blot analysis of 293T, 231, PC3, A549 and K562 cell using TPD52L1 Polyclonal Antibody at dilution of 1:300