

Datasheet for ABIN7001595

**anti-KRT23 antibody**[Go to Product page](#)**1** Image

## Overview

Quantity:	20 µL
Target:	KRT23
Reactivity:	Human, Mouse
Host:	Rabbit
Clonality:	Polyclonal
Conjugate:	This KRT23 antibody is un-conjugated
Application:	Western Blotting (WB), ELISA

## Product Details

Immunogen:	Recombinant protein of human KRT23
Isotype:	IgG
Characteristics:	Polyclonal Antibody
Purification:	Affinity purification

## Target Details

Target:	KRT23
Alternative Name:	KRT23 ( <a href="#">KRT23 Products</a> )
Background:	Keratin, type I cytoskeletal 23 is a protein that in humans is encoded by the KRT23 gene. The protein encoded by this gene is a member of the keratin family. The keratins are intermediate filament proteins responsible for the structural integrity of epithelial cells and are subdivided into cytokeratins and hair keratins. The type I cytokeratins consist of acidic proteins which are

## Target Details

arranged in pairs of heterotypic keratin chains. The type I cytokeratin genes are clustered in a region of chromosome 17q12-q21.

Molecular Weight:	48 kDa
UniProt:	<a href="#">Q9C075</a>

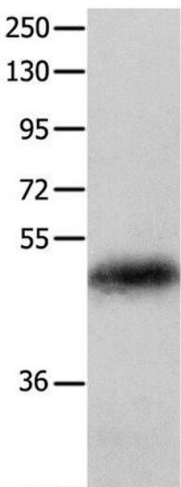
## Application Details

Application Notes:	WB 1:200-1:1000
Restrictions:	For Research Use only

## Handling

Format:	Liquid
Concentration:	0.2 mg/mL
Buffer:	PBS with 0.05 % sodium azide and 50 % glycerol, PH7.4
Preservative:	Sodium azide
Precaution of Use:	This product contains Sodium azide: a POISONOUS AND HAZARDOUS SUBSTANCE which should be handled by trained staff only.
Storage:	-20 °C
Storage Comment:	Store at -20°C. Avoid freeze / thaw cycles.

## Images



### Western Blotting

**Image 1.** Western Blot analysis of Human colon cancer tissue using KRT23 Polyclonal Antibody at dilution of 1:100