



[Go to Product page](#)

Datasheet for ABIN7001642
anti-Claudin 23 antibody

1 Image

Overview

Quantity:	20 µL
Target:	Claudin 23 (CLDN23)
Reactivity:	Human, Mouse
Host:	Rabbit
Clonality:	Polyclonal
Conjugate:	This Claudin 23 antibody is un-conjugated
Application:	Western Blotting (WB), ELISA

Product Details

Immunogen:	Recombinant protein of human CLDN23
Isotype:	IgG
Characteristics:	Polyclonal Antibody
Purification:	Affinity purification

Target Details

Target:	Claudin 23 (CLDN23)
Alternative Name:	Claudin 23 (CLDN23 Products)
Background:	This gene encodes a member of the claudin family. Claudins are integral membrane proteins and components of tight junction strands. Tight junction strands serve as a physical barrier to prevent solutes and water from passing freely through the paracellular space between epithelial or endothelial cell sheets, and also play critical roles in maintaining cell polarity and signal

Target Details

transductions. This gene is expressed in germinal center B-cells, placenta and stomach as well as in colon tumor. This gene is down-regulated in intestinal type gastric cancer.

Molecular Weight: 32 kDa

UniProt: [Q96B33](#)

Pathways: [Cell-Cell Junction Organization](#), [Hepatitis C](#)

Application Details

Application Notes: WB 1:500-1:2000

Restrictions: For Research Use only

Handling

Format: Liquid

Concentration: 0.4 mg/mL

Buffer: PBS with 0.05 % sodium azide and 50 % glycerol, PH7.4

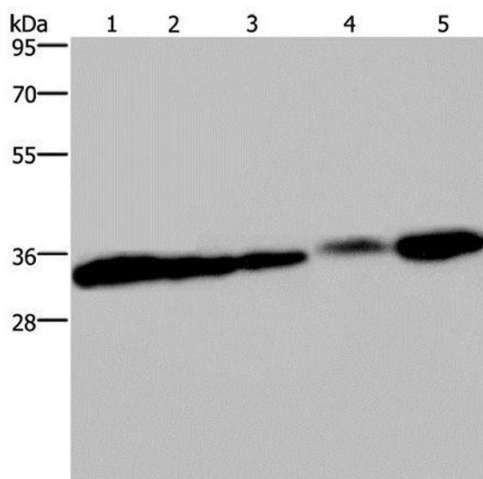
Preservative: Sodium azide

Precaution of Use: This product contains Sodium azide: a POISONOUS AND HAZARDOUS SUBSTANCE which should be handled by trained staff only.

Storage: -20 °C

Storage Comment: Store at -20°C. Avoid freeze / thaw cycles.

Images



Western Blotting

Image 1. Western Blot analysis of HUVEC and 293T cell, Mouse bladder, Human placenta and Mouse kidney tissue using Claudin 23 Polyclonal Antibody at dilution of 1:200