

Datasheet for ABIN7001652

**anti-DKK2 antibody**[Go to Product page](#)**1** Image

## Overview

Quantity:	20 µL
Target:	DKK2
Reactivity:	Human, Mouse
Host:	Rabbit
Clonality:	Polyclonal
Conjugate:	This DKK2 antibody is un-conjugated
Application:	Western Blotting (WB), ELISA

## Product Details

Immunogen:	Recombinant protein of human DKK2
Isotype:	IgG
Characteristics:	Polyclonal Antibody
Purification:	Affinity purification

## Target Details

Target:	DKK2
Alternative Name:	DKK2 ( <a href="#">DKK2 Products</a> )
Background:	This gene encodes a protein that is a member of the dickkopf family. The secreted protein contains two cysteine rich regions and is involved in embryonic development through its interactions with the Wnt signaling pathway. It can act as either an agonist or antagonist of Wnt/beta-catenin signaling, depending on the cellular context and the presence of the co-factor

## Target Details

	kremen 2. Activity of this protein is also modulated by binding to the Wnt co-receptor LDL-receptor related protein 6 (LRP6).
Molecular Weight:	28 kDa
UniProt:	<a href="#">Q9UBU2</a>
Pathways:	<a href="#">WNT Signaling</a>

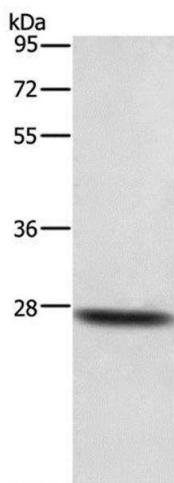
## Application Details

Application Notes:	WB 1:500-1:2000
Restrictions:	For Research Use only

## Handling

Format:	Liquid
Concentration:	0.6 mg/mL
Buffer:	PBS with 0.05 % sodium azide and 50 % glycerol, PH7.4
Preservative:	Sodium azide
Precaution of Use:	This product contains Sodium azide: a POISONOUS AND HAZARDOUS SUBSTANCE which should be handled by trained staff only.
Storage:	-20 °C
Storage Comment:	Store at -20°C. Avoid freeze / thaw cycles.

## Images



### Western Blotting

**Image 1.** Western Blot analysis of Mouse lung tissue using DKK2 Polyclonal Antibody at dilution of 1:500