

Datasheet for ABIN7001786

anti-SEMA3G antibody**1** Image[Go to Product page](#)

Overview

Quantity:	20 µL
Target:	SEMA3G
Reactivity:	Human
Host:	Rabbit
Clonality:	Polyclonal
Conjugate:	This SEMA3G antibody is un-conjugated
Application:	ELISA, Immunohistochemistry (IHC)

Product Details

Immunogen:	Recombinant protein of human SEMA3G
Isotype:	IgG
Characteristics:	Polyclonal Antibody
Purification:	Affinity purification

Target Details

Target:	SEMA3G
Alternative Name:	SEMA3G (SEMA3G Products)
Background:	Semaphorins are a class of secreted and membrane proteins that act as axonal growth cone guidance molecules. They primarily act as short-range inhibitory signals and signal through multimeric receptor complexes. They are usually cues to deflect axons from inappropriate regions, especially important in neural system development. The major class of

Target Details

proteins that act as their receptors are called plexins. SEMA3G possesses anti-migration and anti-invasion ability. SEMA3G inhibited tumor cell migration and invasion, which may be obtained through cell autonomous or paracrine mechanisms, and SEMA3G is a potential target for antitumor migration and invasion.

UniProt: [Q9NS98](#)

Application Details

Application Notes: IHC 1:25-1:100

Restrictions: For Research Use only

Handling

Format: Liquid

Concentration: 0.3 mg/mL

Buffer: PBS with 0.05 % sodium azide and 50 % glycerol, PH7.4

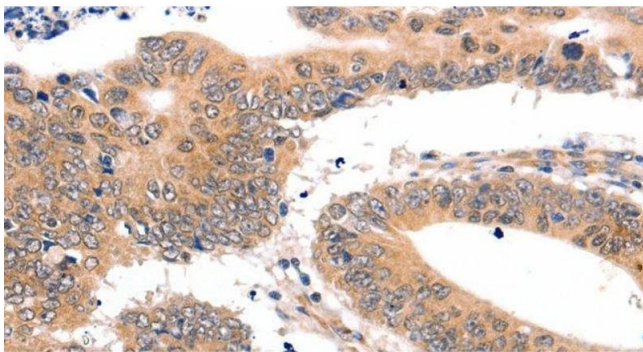
Preservative: Sodium azide

Precaution of Use: This product contains Sodium azide: a POISONOUS AND HAZARDOUS SUBSTANCE which should be handled by trained staff only.

Storage: -20 °C

Storage Comment: Store at -20°C. Avoid freeze / thaw cycles.

Images



Immunohistochemistry (Paraffin-embedded Sections)

Image 1. Immunohistochemistry of paraffin-embedded Human colon cancer tissue using SEMA3G Polyclonal Antibody at dilution 1:30